

[Type here]

CRAIGEND QUARRY – ACTION PLAN (DRAFT) JUNE 2021

MUGDOCK COUNTRY PARK, CRAIGALLIAN ROAD, G62 8EL

BACKGROUND

Craigend Quarry at Mugdock Country Park has for a number of decades been inactive and is not accessible to the public. Over the years the site has filled with water however there are pieces of machinery/vehicles at the bottom which makes the area unsafe for use. In addition there are steep drops, unstable rockfaces and unknown substances in the water relating to its former use.

ISSUES

Although the Quarry is fenced off at present with barbed wire and signage this is often breached by groups of youths, wild swimmers, tombstoner/divers and other unauthorised persons. This has become much more of an issue during 2020 with people staying closer to home.

A risk assessment has been carried out and concludes that the risk to personal safety of those accessing the site is high (appendix 1).

This Action Plan therefore aims to set out a range of measures which will make the site safer and ensure public safety as well as looking into longer term options for the site.

The areas which will be considered are:

- Security of the site itself – upgrading fencing, additional signage and making the environment within the site less accessible through natural means e.g. tree stobs, planting hedges etc.;
- Working with Police – establish a working group with Police Scotland to address the issues and agree a set of measures;
- Longer term plan for the site to be looked into with options for the use of the Quarry and any associated health and safety actions.

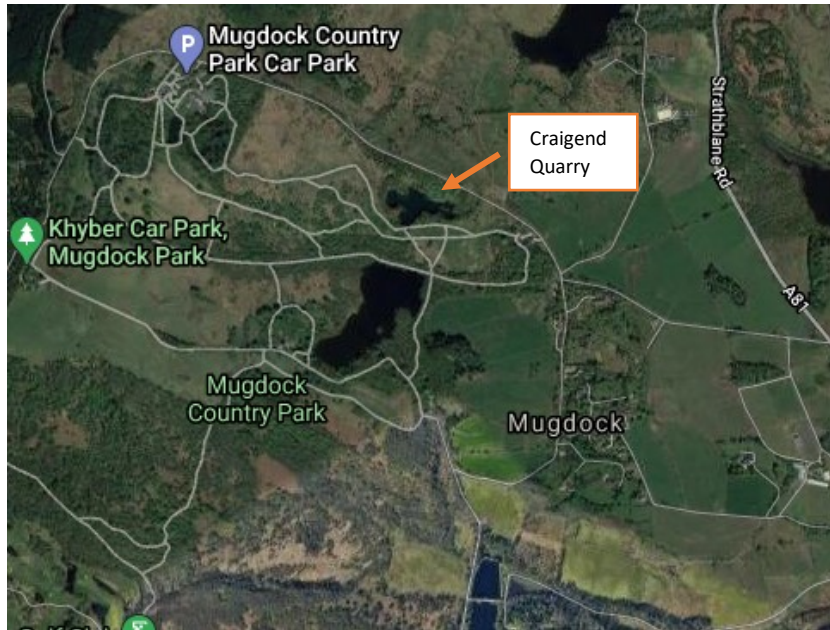
CONCLUSION

By considering the points raised in this Action Plan the best way of dealing with the issues at the Quarry can be addressed and monitored. Including Police Scotland, and other stakeholders, will allow a range of views to be taken into account.

The intended outcome is public safety and it is anticipated that by addressing the issues raised there will be less risk of serious incidents at Craigend Quarry.

[Type here]

LOCATION OF QUARRY

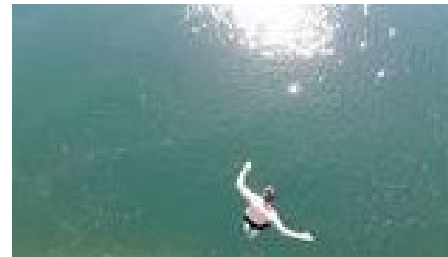
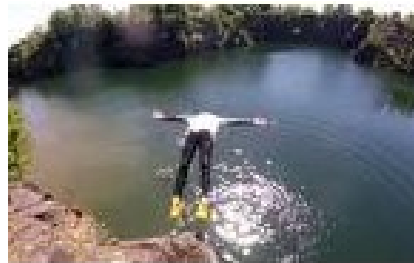


SIGNAGE



[Type here]

IMAGES



[Type here]

SUMMARY OF RISKS AT CRAIGEND QUARRY

The main risks are to life and limb and include:

- Injury through slips and trips from cliff faces onto the rocks below;
- Drowning or hypothermia;
- Unstable rock face;
- Machinery/vehicles and other sharp objects on bottom of Quarry bed;
- Unknown hazardous substances in water and on land around Quarry;
- Drug and alcohol use near cliff edge;
- Remoteness of location and lack of lighting.

CURRENT SECURITY MEASURES

At present there is double fencing around the perimeter of the quarry supplemented by barbed wire. The height of the fence has now been extended and a second layer of barbed wire has been installed during 2020 in response to the repeated destruction of sections of the existing fence. HES guidance has been reviewed.

If alerted that there are unauthorised persons in the Quarry Mugdock staff will approach (min x2 staff) and ask them to leave. Failing this the Police are called on 101 and the Police will ask them to disperse. If they do not leave at this point the Police may carry out enforcement actions if necessary.

The signage around the fencing alerts people to the danger of steep drops at the edge of the Quarry and advises them to keep out of the area. The signage is currently being reviewed and replacement/additional signs will be installed.

The fencing is checked regularly and repair work is carried out on an on-going basis by the Park's Wardens and the Ranger Service.

STAKEHOLDERS

Stakeholders in Craigend Quarry include:

- Mugdock Joint Management Committee
- Park staff
- Police Scotland
- Emergency services
- EDC Emergency Response Team

[Type here]

ACTIONS

Outlined below is a series of actions which aim to address issues raised by the unauthorised use of Craigend Quarry

| Issue | Action | Timescale | Cost | Comments |
|--|---|---------------------|-------------------|--|
| Breaching of security fence by unauthorised individuals trampling or damaging wires to enable access. This has increased from 4-6 times per summer to an almost daily occurrence in 2020. It is expected to continue to rise in 2021 through word of mouth and social media postings. | Obtain costs for providing a stronger, higher alternative to existing fencing. Monitoring and maintenance of the perimeter fence is carried out by Park staff and is taking increasing amounts of time and materials for repairs. Look for external funding to contribute to installation of appropriate fencing and additional patrols in partnership with Community Safety. | 2021 | £90k-£115k | Fencing contractors have been contacted and have provided advice and costs regarding upgrading the fencing taking into consideration the difficulty of the terrain. Funding was secured from the Better Places Fund 2 for additional patrols over the summer at weekends but not for fencing. |
| Evidence of human waste following visits including litter, fires, broken branches, trampled paths, camping equipment, ropes etc. | Improve signage and continue to monitor/improve fencing. Staff to clear mess and dispose of items left behind. | 2021 Ongoing | Signage £100-£200 | New signage for the Quarry has been ordered. At present there is no gated access to the area for staff or emergency services. |
| Unauthorised persons, mainly teenagers, jumping from cliff edge into water or abseiling down rock face on unstable rock. | Staff approach individuals/groups and ask them to leave or call the Police. Meeting with Police Scotland has taken place on site and further discussions will aim to draw up a co-ordinated response. | Ongoing | - | Although staff will approach anyone in the quarry and ask them to leave, if alerted to their presence, this is a judgement call which depends on the type of group. Staff would not be expected to approach groups of drunk youths. |

[Type here]

| Issue | Action | Timescale | Cost | Comments |
|---|--|-----------|----------|--|
| | Put tree branches, stobs and other impediments to block the route to the cliff edge. Plant hedges and trees inside the fenceline. | | | Trees and bushes have been planted within the perimeter fence to provide a natural impediment. Some additional work on planting and using branches and stobs to be carried out. |
| Social media information about the quarry – on YouTube, Tiktok, Instagram etc. Some professional looking videos are currently in circulation. | Investigate how to remove videos Promote safety in waterways through the Park's Facebook page, tying in with EDC's corporate communications team and Police social media | 2021 | | Contact made with Corporate Comms in relation to social media posts promoting safety in waterways Police are able to use social media to alert people to high risk areas although not to draw attention to it too much! |
| Emergency services locating site and reaching site as the Quarry is quite hidden from the road and not easily accessible. | Liaise with Emergency Services and with EDC Emergency Response Team. Investigate a RVP for emergency services and a route for gaining access to the site. | 2021 | - | Fire Service was out following emergency response incident in summer 2020 to locate the best means of access. This should be regularly reviewed. |
| Future plans for the Quarry | Some research carried out into alternative uses for quarry sites An options study could be carried out to review potential uses for the site whether as a biodiversity haven or having regulated human interaction. | 2021/22 | £5k-£10k | A study was carried out previously by an outdoor pursuits organisation to look at potential uses (not able to find it to date) |