



TWECHAR PLACE PLAN

2019-2024

Contents

Introduction	3
If Twechar was a village of 100 people	4 - 5
Community voice	6
Community likes, dislikes and ideas for action	7
Our Assets	8
Actions	9
Community Activities and Facilities	9
Environment	10
Public Services	11
Heritage and Economy	11
Making it happen	12
Appendix: Universal Services	13

East Dunbartonshire has been recognised as one of the best areas to live in Scotland - based on health, life expectancy and educational attainment. Employment rates are high and the level of crime is below the Scottish average. Despite this, inequalities exist across the authority and quality of life falls below the national average in some areas.

[What is the Community Planning Partnership \(CPP\)?](#)

The Community Planning Partnership is made up of local services who work in our areas to make them the best they can be. Members include East Dunbartonshire Council, Police Scotland, the NHS and Health and Social Care Partnership, Scottish Fire and Rescue, Scottish Enterprise, East Dunbartonshire Voluntary Action and a variety of other voluntary sector organisations.

[Who are community planning partners?](#)

Local services are targeting work in four East Dunbartonshire communities, including Twechar. When they work together and with the community, this is known collectively as the Community Planning Partnership. Services include East Dunbartonshire Council, East Dunbartonshire Voluntary Action, the NHS and Health and Social Care Partnership, Police Scotland, Scottish Enterprise and the Scottish Fire and Rescue Service. You can find out more about the services these organisation deliver in Appendix 1 (Universal services). The Community Planning Partnership Board convenes four times per year and various themed working groups meet in between to focus on specific topics and make decisions.

[What is this Place Plan?](#)

Place Plans are bespoke plans for four geographic communities in East Dunbartonshire that have been identified and agreed as experiencing the most inequality. These plans are a requirement of the Community Empowerment Act (2015), which places the duty on Community Planning Partnerships to plan together for areas which experience poorer outcomes. The four communities identified as 'Place' areas within East Dunbartonshire are: Hillhead and Harestanes; Lennoxton; Auchinairn; and Twechar.

Twechar Community Action worked with Coalfields Regeneration Trust (CRT) in 2016 and 2017 to develop its own family-friendly five-year Community Action Plan 2017-2022. The aim of this plan is to show where and how community planning partners can support Twechar to achieve its Community Action Plan. The Place Plan for Twechar in effect will act as a statement of support for the Community Action Plan and identify any additional work required to help address inequality in this area.

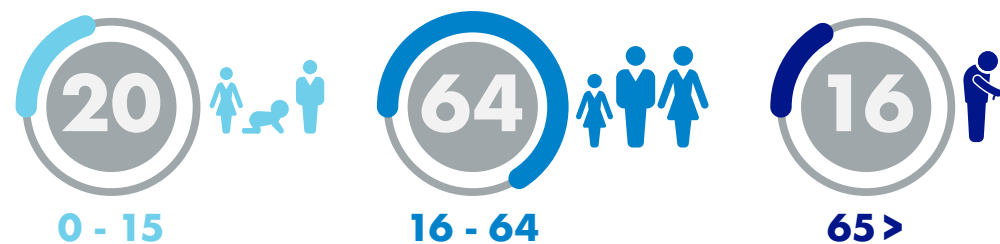


Population

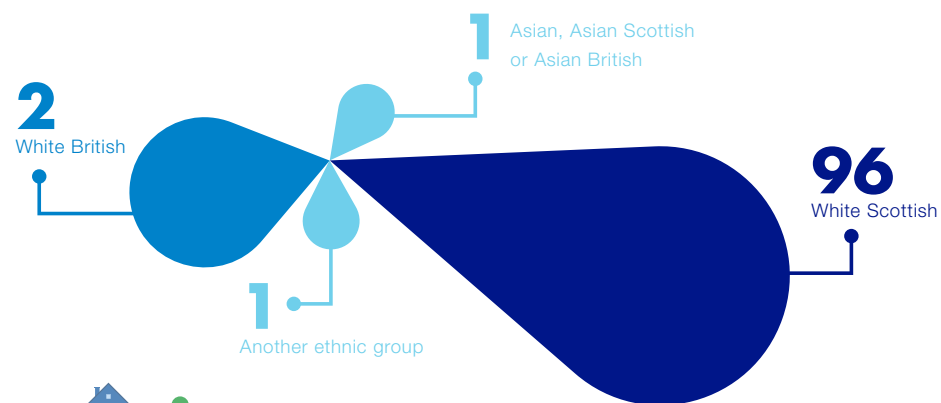
Sex



Age

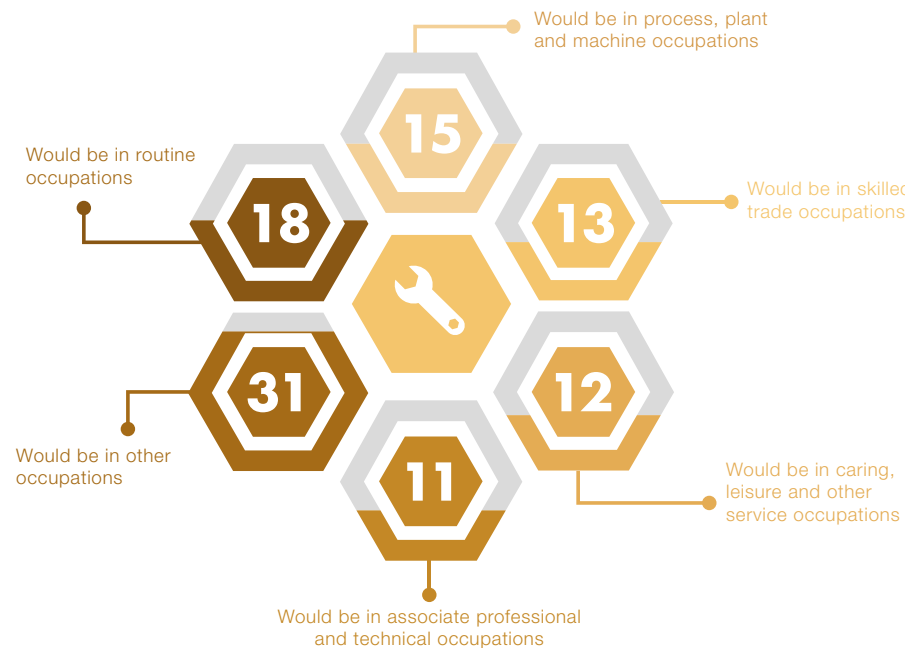


Ethnicity



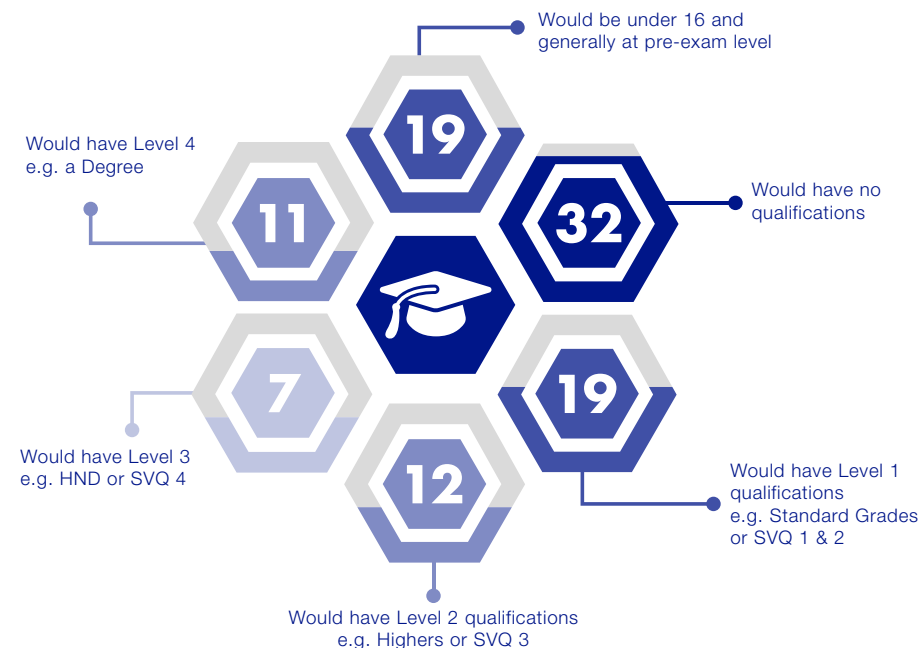
Most common professions

Work Amongst all those aged 16 and over who are economically active:

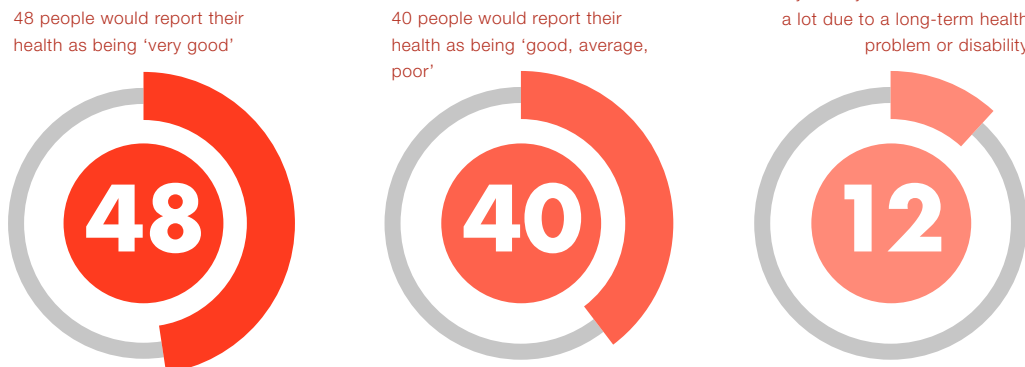


Education

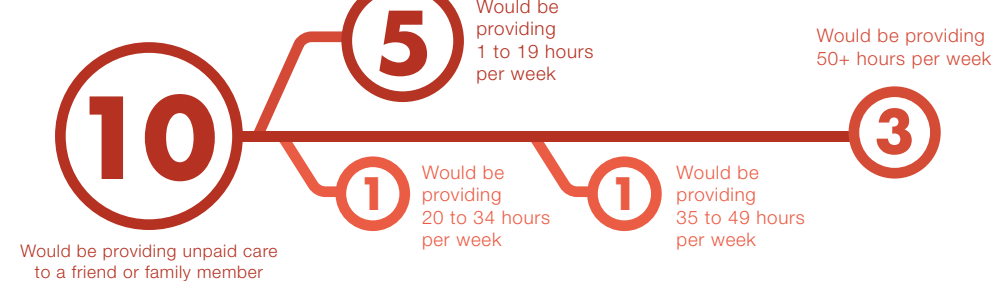
Education In terms of highest level of education



Health In terms of health



Care



Community voice

Twechar Community Action Group worked with Coalfields Regeneration Trust (CRT) to organise a joint household survey and an open day where residents could vote for their favourite projects. Surveys were returned from 84 households, representing the views of 252 people, and 110 people attended the voting event. CRT also provided a £25,000 grant, with local people involved in deciding how the funds were spent, in order to get priority projects off the ground.

Funding received by Twechar allowed some local groups and organisations to offer free or low-cost activities and training to residents. These included wood-crafting classes, Bikeability training, and music lessons for young people and adults. Local groups and organisations reported increased community participation due to increased awareness of existing projects, and the provision of new and affordable activities.

East Dunbartonshire Council and its community planning partners carried out additional surveying in Twechar using the Place Standard Tool. The Tool was adapted for use online, in focus groups and during public meetings. Different groups of local people were reached and invited to respond to ensure that the responses broadly reflected the make-up of Twechar (such as population size, age and gender). Around 100 local people responded, which is approximately 9% of the local population.



Community likes, dislikes and ideas for action

Twechar Community Action and Coalfields findings

[Community Activities and Facilities](#)

People highlighted that there was a need to develop and promote more activities. There was also a need to encourage young people to get involved with the Youth Committee and further develop the Junior Volunteer Programme, as well as a desire to encourage volunteers of all ages to be more involved in activities.

[Environment](#)

There was strong support for the creation of a Fairy Glen and for young people to be encouraged to get involved to ensure they appreciate and look after it. There is a good network of footpaths in and around the village, but it was felt they were increasingly becoming overgrown, messy and less used as a result. As links within the community, as well as with the wider countryside, it was really important that they were improved and maintained. A need was also identified to install information signage and heritage landmarks at the entrances to the village.

[Public Services](#)

There was a need to improve public transport, and also to promote the local bus and train timetables. Traffic volume and road safety were identified as real concerns for the community. There was a need to continue to work with East Dunbartonshire Council and other organisations to find lasting solutions so that the roads were safer.

[Heritage and Economy](#)

Twechar has been a site of notable historical significance dating back to the second century. The community wish to develop and promote their natural and cultural heritage assets, to generate community pride and boost the local economy.

[Place Standard Community Engagement Findings](#)

During the Place Standard Tool sessions, the Council's 2005 regeneration plan for Twechar (Twechar Masterplan) was acknowledged as having made a difference. New-build houses brought more families to the village and went some way to addressing population decline. Most people agreed there was a strong sense of community and identity, with a range of family events arranged by the community to bring people together regularly.

Housing was still seen to be an issue, with older properties requiring attention due to perceived lapsed general maintenance. More new-build housing was seen to be a priority for many. This issue continues to be addressed further to the Twechar Regeneration Masterplan (2005) with new-build housing still to be built.

Overall the highest scoring Place Standard themes, and therefore least problematic, were: feeling safe; natural space; identity and belonging; and housing and community. The lowest scoring themes - requiring more immediate attention - were: traffic and parking; public transport; and work and the local economy.

The main strategies and priorities the community will work towards achieving, in partnership with public agencies and other supporters, are noted in the table of community actions under the following headings:

- Community Activities and Facilities
- Environment
- Public Services
- Heritage and Economy

Twechar Assets - Key

- ① Green space and forest
- ② Forth & Clyde canal
- ③ Iron Age & Roman fort
- ④ Housing
- ⑤ Healthy Living centre
- ⑥ Antonine Wall



Actions

Community Activities and Facilities

Action	Responsibility	Timescale
<ul style="list-style-type: none"> • Support the development of services for the most vulnerable in the community through a befriending phone service, one-to-one befriending service and group-work befriending service 	EDVA	1-2 years
<ul style="list-style-type: none"> • Build on the existing activities for young people and develop further volunteering opportunities like the Youth Committee, Saltire Awards and Junior Volunteering Programme 	EDVA/Youth Bank	1-2 years
<ul style="list-style-type: none"> • Support and add value to existing information and training for parents with children on the autistic spectrum, with particular focus on formats and timings to suit working parents 	East Dunbartonshire Council – Local Area Co-ordination	1-2 years
<ul style="list-style-type: none"> • Support community capacity building and strengthen the existing skillset of the community, in partnership with Twechar Community Action and local services 	East Dunbartonshire Council - Community Planning Partnership Team	ongoing



Environment

Action	Responsibility	Timescale
<ul style="list-style-type: none"> • Progress actions in partnership with Twechar Community Action to enhance core paths in Twechar Public Park, better connecting residents to the primary school and Healthy Living Centre 	East Dunbartonshire Council - Green Network Strategy and Open Space Strategy	3-5 years
<ul style="list-style-type: none"> • Progress actions to upgrade active travel access between Twechar and Kirkintilloch to create a circular route and generally improved access. This will include examining opportunities along the canal corridor and options to enable/fund potential improvements 	EDVA/Youth Bank	1-2 years
<ul style="list-style-type: none"> • Progress actions in partnership with Twechar Community Action, including biodiversity, woodland improvements and meadow planting in the northern section of Twechar Public Park 	East Dunbartonshire Council - Green Network and Local Transport Strategies	3-5 years
Continuation of ongoing work to develop area currently beset by fly tipping into a food growing area, working in partnership with Twechar Community Action	East Dunbartonshire Council - Open Space Strategy and Twechar Community Action	1-3 years
Improve village appearance at both entrances and improve information signage	East Dunbartonshire Economic Partnership and Twechar Community Action	1-3 years
Investigate heritage landmarks for entrances to the village	East Dunbartonshire Economic Partnership and Twechar Community Action	1-3 years

Public Services

Action	Responsibility	Timescale
<ul style="list-style-type: none"> Identify potential areas that could be utilised for improving car parking in Twechar 	East Dunbartonshire Council - Local Transport Strategy	1-2 years
<ul style="list-style-type: none"> Improved broadband services locally. East Dunbartonshire Council in partnership with Twechar Community Action to engage with national broadband programmes. 	East Dunbartonshire Council (Business Support) and Twechar Community Action	1-2 years
<ul style="list-style-type: none"> Continue to develop skills for learning, life and work. Twechar Community Action to continue to be represented on the Employability and Financial Inclusion Group. 	CLD Partnership	Ongoing

Heritage and Economy

Action	Responsibility	Timescale
Work in partnership with Twechar Community Actions, partners and potential funders to create a heritage centre that will increase tourism to the village	Twechar Community Action and East Dunbartonshire Council – Regeneration and Town Centres team	1-3 years
Attract small businesses and jobs to the village, and investigate potential for small units in Barrhill	East Dunbartonshire Economic Development Partnership and Twechar Community Action	1-3 years
Wider promotion of amenities, walks and heritage to encourage people to stop and visit	Twechar Community Action	1-2 years
Support Twechar Healthy Living & Enterprise Centre in feasibility and design options for a tourism and training centre at the canal slip	East Dunbartonshire Council – Regeneration and Town Centres, and Twechar Community Action	1-2 years

Making it happen

Public and voluntary sector organisations and groups operating in Twechar will align to the priorities of the Community Action Plan - working together and with local people at every opportunity to do so. Local businesses can play an important role too.

Public and voluntary sector organisations and groups operating in Twechar will work together, and with local people, to align to the priorities of the Community Action Plan at every opportunity.

This plan, in conjunction with the Community Action Plan, will be used by partners to apply for funding to make ideas and proposals a reality. Any organisation or group operating in Twechar is encouraged to do so, consulting with Twechar Community Action to ensure local people are involved in decisions and that progress in the community is joined up. A community-led update and progress report will be provided annually - supported by the council's community development worker and partners.

There is a lot of current and planned activity to help deliver the plans. If you would like to know more or get involved please contact:

Twechar Healthy Living & Enterprise Centre on 01236 827154

or

East Dunbartonshire Council - e-mail communityplanning@eastdunbarton.gov.uk

or call 0300 123 4510.



Appendix 1 - Universal services

<div><h2>EDC</h2><p>East Dunbartonshire Council</p></div> <div><p>Provides a wide range of services including:</p><ul style="list-style-type: none">• Community protection• Early learning, childcare and education• Registration services• Roads• Economic development• Housing• Planning and building standards• Recycling and waste</div>	<div><h2>Police Scotland*</h2></div> <div><p>Enforces the law and keeps us safe. Local Police priorities are:</p><ul style="list-style-type: none">• Tackling violence• Disorder and antisocial behaviour• Protecting people• Increasing public confidence and local engagement• Tackling serious crime• Responding to major events</div>	<div><h2>Scottish Enterprise</h2></div> <div><p>Is Scotland's main economic development agency. The organisation works with partners in the public and private sectors to identify and exploit the best opportunities to deliver a significant, lasting effect on the Scottish economy.</p></div>	<div><h2>Scottish Fire & Rescue Service</h2></div> <div><p>In addition to responding to fire emergencies, SFRS also carries out:</p><ul style="list-style-type: none">• Youth development programmes• Safety campaigns• Home fire safety checks• CPR training• Traffic collision response</div>	<div><h2>Health & Social Care Partnership</h2></div> <div><p>A newly integrated body which brings together a wide range of services including:</p><ul style="list-style-type: none">• Residential Child Care Service• Children and Families Services• Primary Care Services• Youth Justice Service• Home Care Service• Occupational Therapy Service• Community Alarm & Telecare Service• Mental Health Services• Public Health Improvement Services</div>	
<div><h2>East Dunbartonshire Leisure & Culture Trust</h2></div> <div><p>Is a Charitable Trust established by East Dunbartonshire Council to deliver culture & leisure services. Services are delivered from 3 leisure centres (including pavilions); 8 libraries, a museum, an art gallery and an arts centre.</p></div>	<div><h2>Skills Development Scotland</h2></div> <div><p>Provides services to help people achieve career success and support businesses with their goals.</p></div>	<div><h2>HMP Low Moss</h2></div> <div><p>Manages around 780 men on remand, short term, long term and life and extended sentences. Supports people to re-integrate back into the community.</p></div>	<div><h2>New College Lanarkshire</h2></div> <div><p>Is recently merged College providing a range of full and part time courses in Computing, Art and Design, Employability and Hair.</p></div>	<div><h2>Registered Social Landlords</h2></div> <div><p>In addition to the housing provided by East Dunbartonshire Council, there are fifteen housing associations that provide social housing in East Dunbartonshire.</p></div>	<div><h2>East Dunbartonshire Voluntary Action</h2></div> <div><p>Facilitates, enables and connects the capacity and engagement of the local voluntary sector, social enterprises, and volunteering.</p></div>







places & people
BRAND NEW FOR PHASE 3 2-3 BED HOUSES

places & people

**ROMAN FIELDS
BRAND NEW
HOMES FOR SALE
INCLUDING LIMITED
SHARED EQUITY**

SHOW HOME
NOW OPEN SAT-SUN

CALL 01236 780818

YOUR MOVE LAND NEW HOMES

places & people
BRAND NEW FOR PHASE 3 2-3 BED HOUSES

20
Twenty's Plenty

TWECHAR PLACE PLAN

2019-2024