

**GENERAL NOTES**

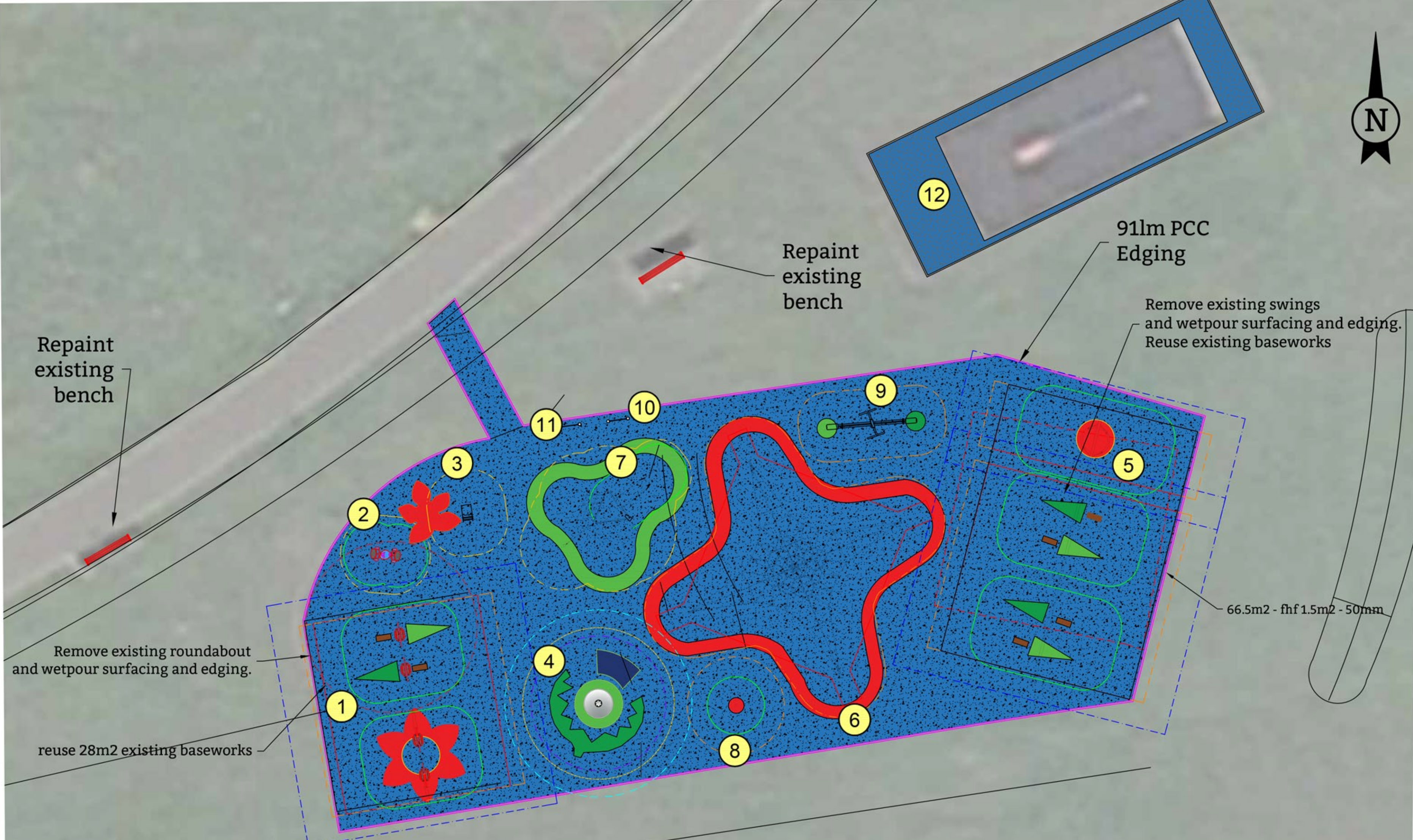
If not indicated on this plan, north point must be confirmed prior to installation to ensure that slides do not face due south.

Exact positions & orientation of new items may be subject to a final site survey and setting out plan.

Any inconsistencies on site should be verified with HAGS before commencement of work.

HAGS recommend that existing trees are risk-assessed by the client to ensure the integrity of accessible branches, that overhanging limbs do not conflict with new play equipment or vehicle access and that the canopy will not produce excessive leaf drop which could cause a hazard within the play area.

This design layout conforms to the relevant EN Safety Standard.



**KEY**

- Falling Space Zone (EN1176)
- Free Space Zone (EN1176)
- Clearance Zone (EN1176)
- Movement Space (EN16630)
- Training Space (EN16630)

**CUSTOMER**  
East Dunbartonshire Council

**PROJECT**  
Afton View Play Area

**TITLE**  
Proposal

	A	B	C	D	E
	No	Code	Name	fhf	Surfacing
1					
2	1	SWO184(008)	1.8m Olympic Swing 4 Seat Colour Collection 8	1.47m	Prime all hard surfaces. Supply and install 304.5m2 of Black:Light Blue Supply and install 66.5m2 of Black:Light Blue 50/50 EPDM with Graphics at 50mm depth colour breakdown Black:Light Blue 50/50 mix 349m2, Light Green 13.5m2, Red 25m2, Dark Green 5m2, Brown 1m2, Dark Blue 1m2
3	2	X-ROK(001)	Zingo Roko Mini Seesaw Colour Collection 1	0.6m	
4	3	HAG8044703	Prinsy Springer (green) 1 seater	0.6m	
5	4	RA401S	Rota Roka	0.8m	
6	5		2.4m swing 1no. basket seats and 4no flat sea	1.5m	
7	6	TAY8074808	Active 4000, 4m high	0.6m	
8	7	X-004-S(002)	Zingo Kvar (steel slide)	1.2m	
9	8	HAG8065665	Pirouette Spinner Spectrum Yellow	0.6m	
10	9	HAG8049488	VIPPY see-saw (Red)	1.1m	
11	10	HS8061963	Tic Tac Toe Panel with steel posts	n/a	
12	11	HS8061969	Number Fun Panel with steel posts	n/a	
13	12		Existing slide		
14	Removals - breakout and remove existing roundabout and swing, remove existing wetpour and edging. Reuse existing baseworks				
15	Drainage - Excavate pit, line with terram, fill with drainage stone to 150mm below FSL and back fill with 150mm top soil and turf 4m3   Excavate trench 300mm wide by 450mm deep, line with terram, lay bed of pea gravel, install 100mm diam. perforated plastic pipe, fill with pea gravel to 150mm below FSL and backfill with 150mm top soil and turf - 35lin m				
16	Landscaping - Allowance for Mounding - [2.2]m wide x [14]m long x 500mm high (as per design)   Supply & lay [30]m2 of 50mm topsoil & seed				
17	Reinstatement - Supply & lay [100]m2 of 50mm topsoil & turf				
18	Repaint existing bench x 2Rubdown and repaint seat/bench   Painting Specification - 1. Prepare by means of manual abrasion to remove loose and flaking paint.   2. Abrade surfaces to provide key.   3. Apply to rusted areas, 1 no. spot coat of Sigmacover 2 rust tolerant epoxy primer.   4. Following which Spot coat any bare galvanise using the finishing system.   5. Apply 2 no. coats of Vinadac Solvent Bourne Acrylic to all surfaces.   (Painting of stainless steel, galvanised finish steel, plastic, HDPE or HPL not included)				

DATE: 25/02/2020 SCALE: 1:100 @ A2

DRAWN BY: LHR CHECKED BY: TDG

DRAWING NUMBER: Q-25134-H7B3-C REVISION: 0

SHEET 1 OF 1