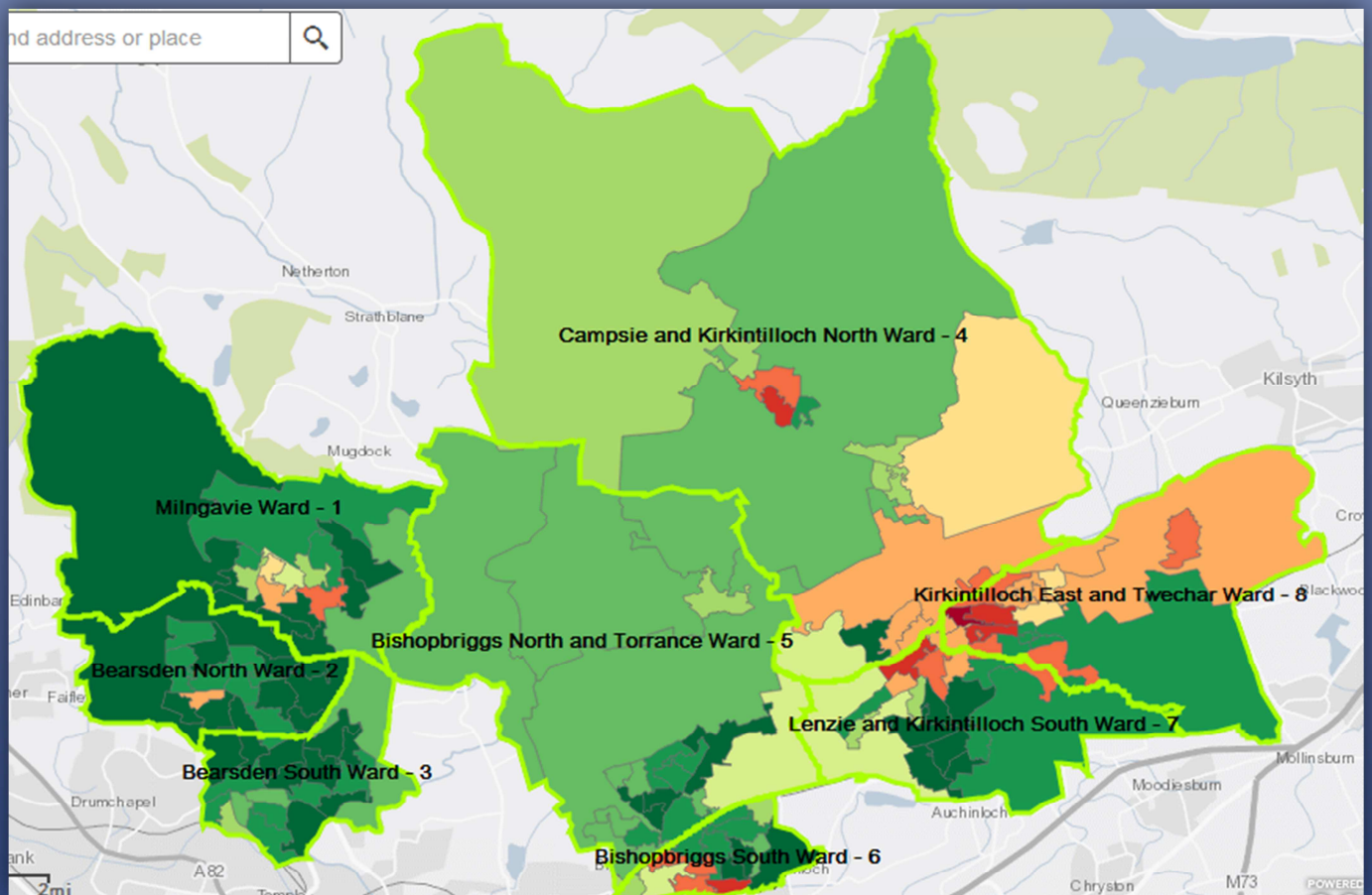


Scottish Index of Multiple Deprivation 2016



Datazone Analysis

November 2016

Corporate Performance and Research

Table of Contents

Executive Summary

Background and Methodology

Geographies

Tables and Terminology

Data by Decile and Area Maps

Change over Time

Most Deprived Areas in East Dunbartonshire

Most Deprived Areas by Domain

Ward Level Analysis

Ward 1- Milngavie

Ward 2- Bearsden North

Ward 3- Bearsden South

Ward 4- Campsie and Kirkintilloch North

Ward 5- Bishopbriggs North and Torrance

Ward 6- Bishopbriggs South

Ward 7- Lenzie and Kirkintilloch South

Ward 8- Kirkintilloch East and Twechar

Executive Summary

Introduction

The Scottish Index of Multiple Deprivation (SIMD) is a tool for identifying areas of poverty and inequality across Scotland. The SIMD is regarded as the official measure of deprivation in Scotland and identifies small area concentrations of multiple deprivation, by assigning each small area (datazone) in Scotland a ranking based on its level of deprivation.

In East Dunbartonshire the SIMD has been used to inform the areas chosen for our Place approach and is used to evidence the area based targeting of resources to reduce inequalities in the area in line with our Local Outcome Improvement Plan. Additionally SIMD has been used as a basis for determining Government funding for regeneration projects.

This guide, produced by the Performance and Research Team, aims to provide a breakdown of data from SIMD 16 by Ward and should be used in conjunction with the GIS stats map which can provide further detail as required.

Key findings for 2016 update:

- East Dunbartonshire remains relatively less deprived in contrast to other Scottish local authorities with the majority of East Dunbartonshire datazones falling into the least deprived of the SIMD.
- At a national level East Dunbartonshire has one of the lowest shares of deprived datazones of any local authority area. At the other end of the spectrum we also have the second highest share of the least deprived datazones in Scotland behind East Renfrewshire.
- East Dunbartonshire has the second highest proportion of areas in Scotland that are not deprived according to SIMD.
- Although East Dunbartonshire as a whole is relatively less SIMD deprived than other local authorities in Scotland, there are specific areas within East Dunbartonshire that fall below the Scottish average.
- Improvements at a national level have led to East Dunbartonshire having a greater number of datazones in the 20% most deprived in Scotland than in 2012.
- East Dunbartonshire has 7 Datazones in the most deprived 25% in Scotland, these are located in Hillhead, Auchinairn, Lennoxton and Kirkintilloch West.
- Hillhead remains the most deprived area in East Dunbartonshire, however SIMD ranks in the area have improved with 2 datazones moving out of the 5% most deprived in Scotland and the majority of datazones showing less deprivation than in SIMD 2012.
- 1 datazone in Kirkintilloch West has entered the 25% most deprived.
- Of the individual domains East Dunbartonshire has the most deprived datazones in the access domain which would be expected given the rural nature of certain parts of the authority.
- Since the first SIMD publication in 2004 East Dunbartonshire has roughly the same levels of deprivation, however certain areas such as Twechar have shown a marked improvement over time.
- Ward 8, Kirkintilloch East and Twechar stands out as the most deprived Ward in East Dunbartonshire with 82% of the datazones in the 50% most deprived nationally compared to the East Dunbartonshire average of 25%.

Background & Methodology

Background

The Scottish Index of Multiple Deprivation (SIMD) is regarded as the official measure of deprivation in Scotland and identifies small area concentrations of multiple deprivation. The Index provides a *relative* measure of deprivation, and is used to compare small areas (datazones) across Scotland by providing each zone with a unique ranking from most deprived (rank 1) to least deprived (rank 6,976).

The aim of this study is to provide Council with an objective analysis of deprivation in small geographic areas across the local authority and to place those small geographic areas in the context of a multi-member ward, the local authority and Scotland.

The information provided by this analysis and subsequent updates will:

- i) identify small areas where issues of multiple deprivation prevail
- ii) identify thematic issues of deprivation which may exist across the authority
- iii) provide an evidence base to inform development of the Local Outcome Improvement Plan and subsequent targeted interventions by community planning partners.

Methodology

The overall SIMD Rankings are determined using 38 individual indicators across 7 domains, namely:

- Income
- Employment
- Health
- Education
- Housing
- Access to Services
- Crime.

These domains have been given different weightings by the Scottish Government to provide the overall SIMD ranking but are also ranked individually for purpose of analysis. The Income and Employment domains are seen as the highest priority areas and are given the largest weighting towards the overall rank, followed by Health and Education. Proportionally lower weightings are given to the Access, Housing and Crime domains.

Due to the relative ranking of all comparable small areas in Scotland, the SIMD cannot be used to quantify how much more deprived one area is than another. For example, it is not possible to say that datazone X, ranked 50, is twice as deprived as datazone Y, ranked 100.

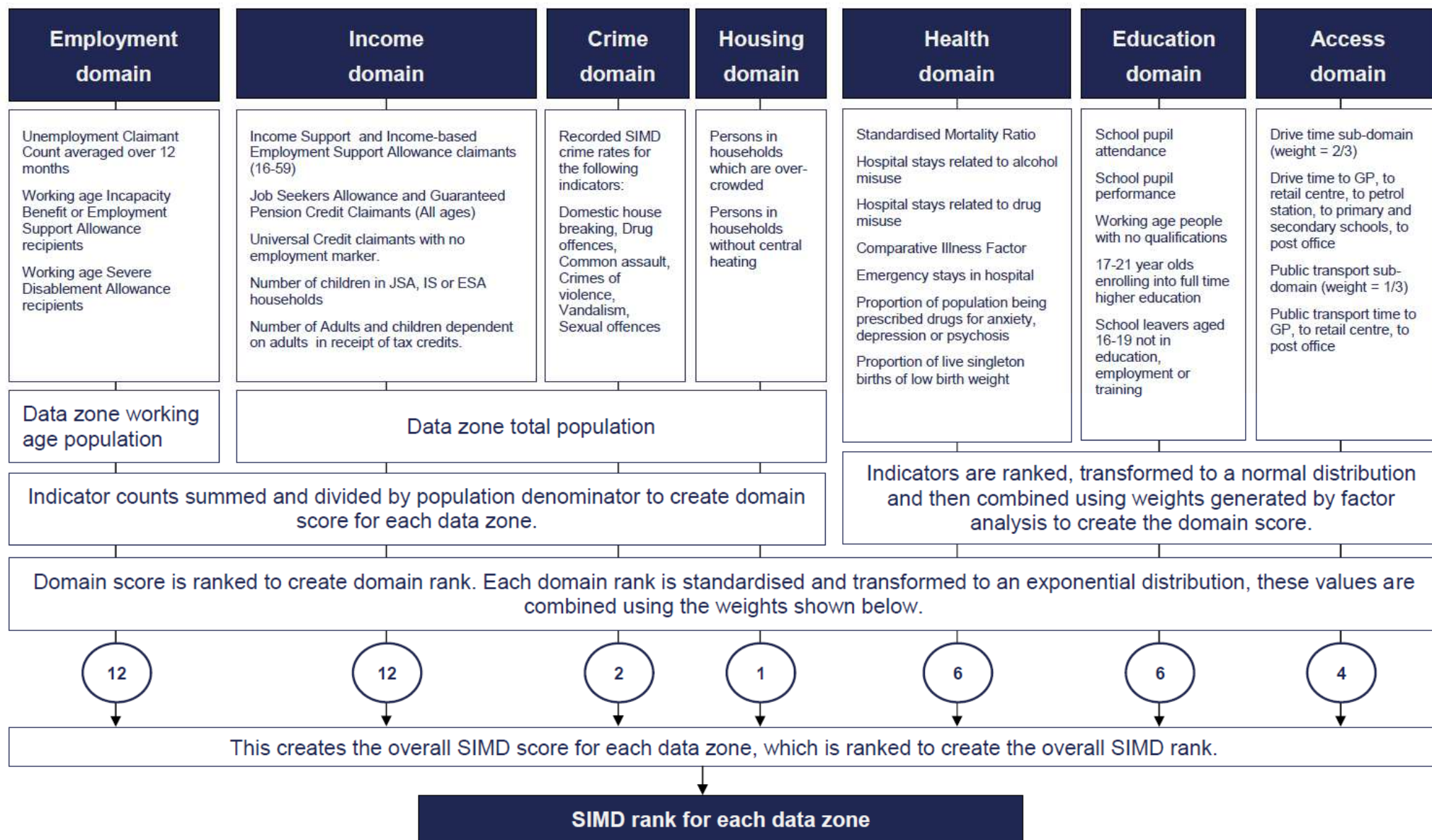
While the SIMD measures concentrations of deprivation it is not a measure of relative affluence and is not useful to be used as such. For example, it is not possible to say the area ranked 6,505 is the most affluent in Scotland but it is possible to say it is the least deprived.

Additional data sources

Although primary analysis was undertaken using data from the 2016 SIMD, a number of other statistics have been sourced from Scottish Neighbourhood Statistics.

How SIMD is Calculated

SIMD16 Methodology

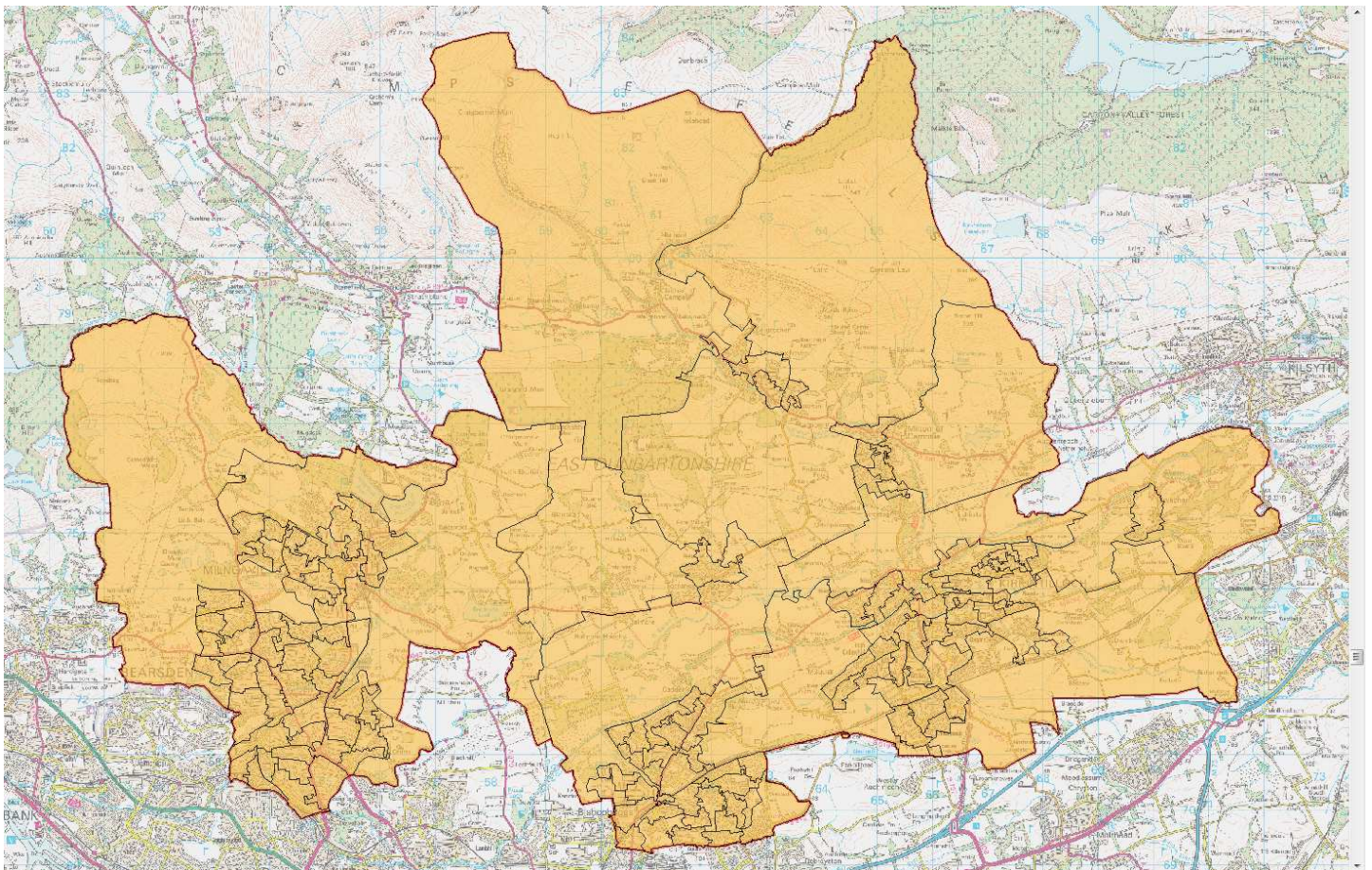


Geographies

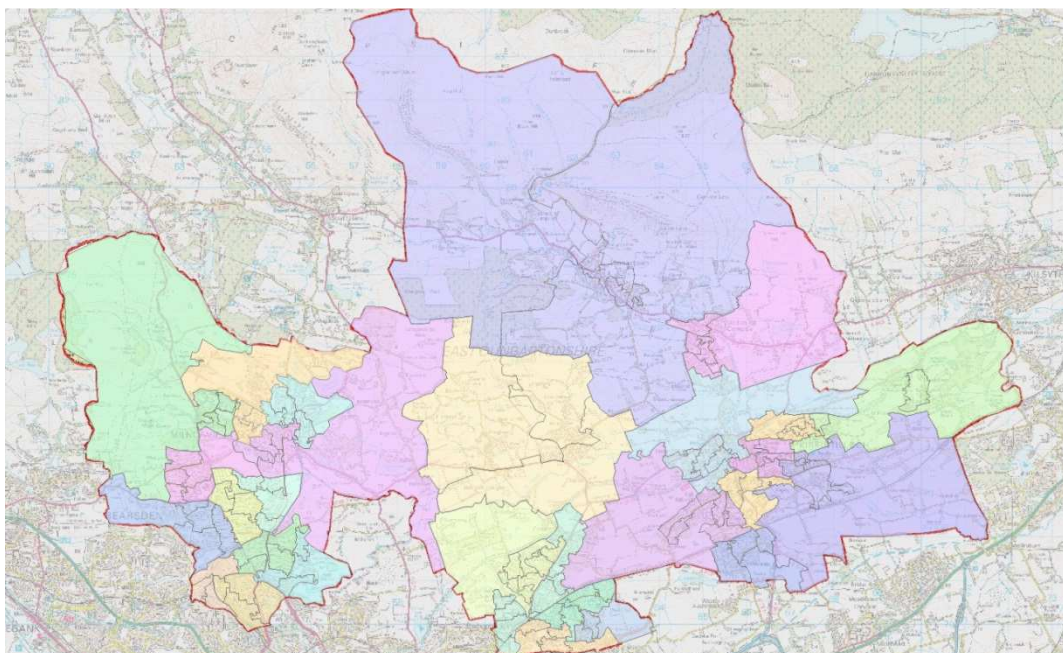
Datazones

Datazones were developed by the Scottish Government during 2002-03 and are regarded as the core geography for the availability and analysis of statistics in Scotland. Datazones are determined by population, and as such, datazones in urban areas cover a smaller geographical area than datazones in rural areas. The average population of a datazone in Scotland is 760.

Following the 2011 Census the datazones were to be redrawn to reflect changes in population and to continue to provide a reliable comparison relative to other datazones. Existing boundaries in most cases have been split or merged with other datazones. This change has resulted in East Dunbartonshire going up to 130 from 127 datazones, it also means that it is not appropriate to make change over time comparisons from previous years in areas where datazone boundaries have changed.



Intermediate Zones



The second layer of geography which is commonly used are known as 'Intermediate Zones'. There are 28 intermediate zones in East Dunbartonshire, each formed from a cluster of two or more datazones. These intermediate zones may be considered to approximate natural communities. Intermediate zones have both an eight digit identifier and are named according to the area they are located, i.e. "Kilmardinny West".

Multimember Wards



The third layer of geography is the multi-member ward. East Dunbartonshire has eight wards each represented by three Elected Members. While datazones nest within local authority boundaries they are not necessarily aligned with the boundaries of the new multi-member wards. For the purpose of this analysis each datazone has been assigned to a multi-member ward on a 'best-fit' basis thereby avoiding issues of duplication, as can be seen in the table overleaf.

Table Showing Breakdown of Geographies used

Multi Member Ward		Number of Datazones
Milngavie	Keystone and Dougalston	5
	Barloch	4
	East Clober and Mains estate	4
	West Clober and Mains Estate	4
Bearsden North	South Castlehill and Thorn	5
	Kilmardinny West	4
	Kilmardinny East	4
	North Castlehill and Thorn	5
Bearsden South	Westerton East	5
	Westerton West	3
	Kessington East	4
	Kessington West	4
Campsie and Kirkintilloch North	Kirkintilloch West	5
	Milton of Campsie	5
	Lennoxtown	5
Bishopbriggs North & Torrance	Bishopbriggs West and Cadder	8
	Bishopbriggs North and Kenmure	7
	Torrance and Balmore	3
Bishopbriggs South	Auchinairn	6
	Woodhill East	3
	Woodhill West	5
Kirkintilloch South	Kirkintilloch South	4
	Lenzie North	7
	Lenzie South	4
Kirkintilloch East & Twechar	Harstanes	4
	Hillhead	5
	Rosebank and Waterside	4
	Twechar and Harstanes East	4

Tables and Terminology

Terminology

- A decline in SIMD rank indicates that the area has become more deprived relative to other areas in Scotland and would see the ranking move closer to number 1.
- An improvement in SIMD rank indicates the area has become less deprived in relation to other areas in Scotland and would see the ranking move closer to 6,976.
- As the SIMD measures concentrations of deprivation, (not affluence) an area described as being in the top 25% of the SIMD is one of the most deprived areas in Scotland, not one of the least.
- While most local authorities use 20% mark as the cut off for deprived areas, due to the relatively higher rankings in East Dunbartonshire, this report examines more closely areas in the 50% most deprived in Scotland with a particular emphasis on the handful of areas which fall into the top 25% most deprived.
- Each datazone has been assigned a “decile” depending on where it sits in the ranking table. A datazone in the 10% most deprived in Scotland would have a decile of 1 and a datazone in the 10% least deprived in Scotland would have a decile of 10.
- For breakdowns of some data we have measured by vigintile which divides the number of datazones by 20, so for example vigintile one is 0-5% most deprived and vigintile 2 is 5-10% most deprived.
- As datazone boundaries have changed following the 2012 update and there are now a higher number of datazones in Scotland (6,976 instead of 6,505) and an extra 3 datazones in East Dunbartonshire we would exercise caution in direct comparisons with previous years data. Where we have done this we have provided analysis proportionate to the overall rather than using rank comparisons. i.e. proportion of datazones in the 5% most deprived rather than number.

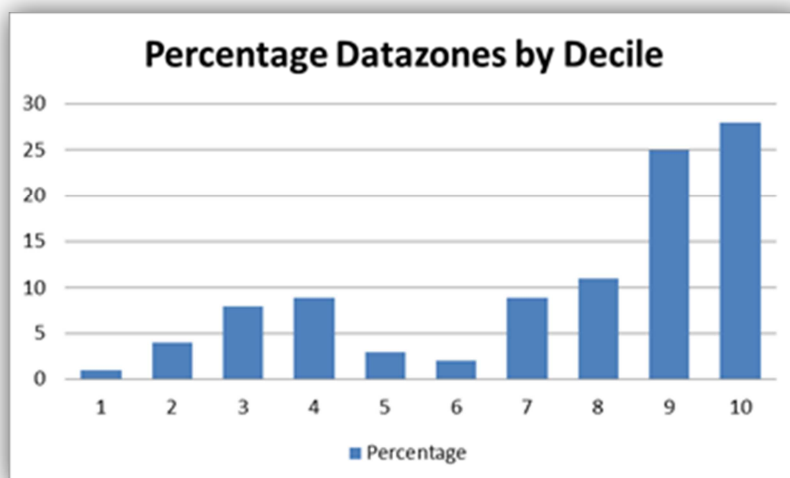
Tables

- The tables for the wards have been colour coded to allow understanding of where each rank sits in the SIMD, we have allocated the following colour coding;

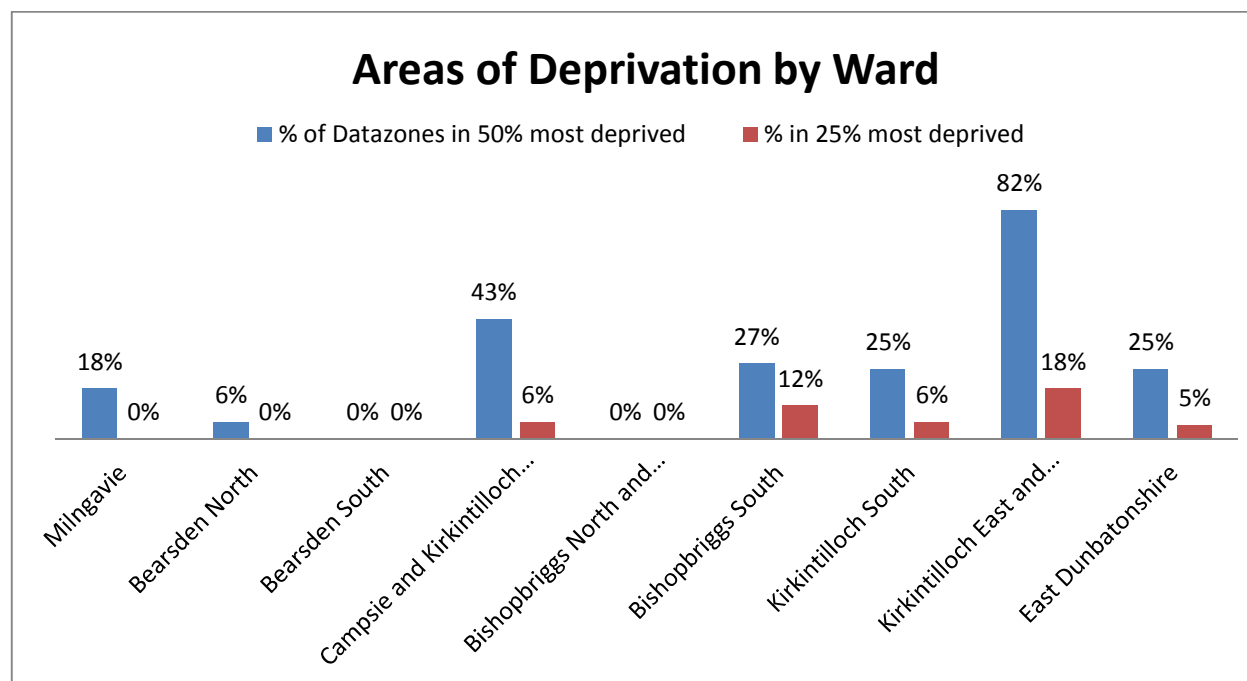
	In 25% LEAST deprived of Scottish Datazones
	In 50% MOST Deprived of Scottish Datazones
	In 25% Most Deprived of Scottish Datazones

Breakdown of Datazones by Decile

2016	
SIMD Decile	Percent
1	1
2	4
3	8
4	9
5	3
6	2
7	9
8	11
9	25
10	28

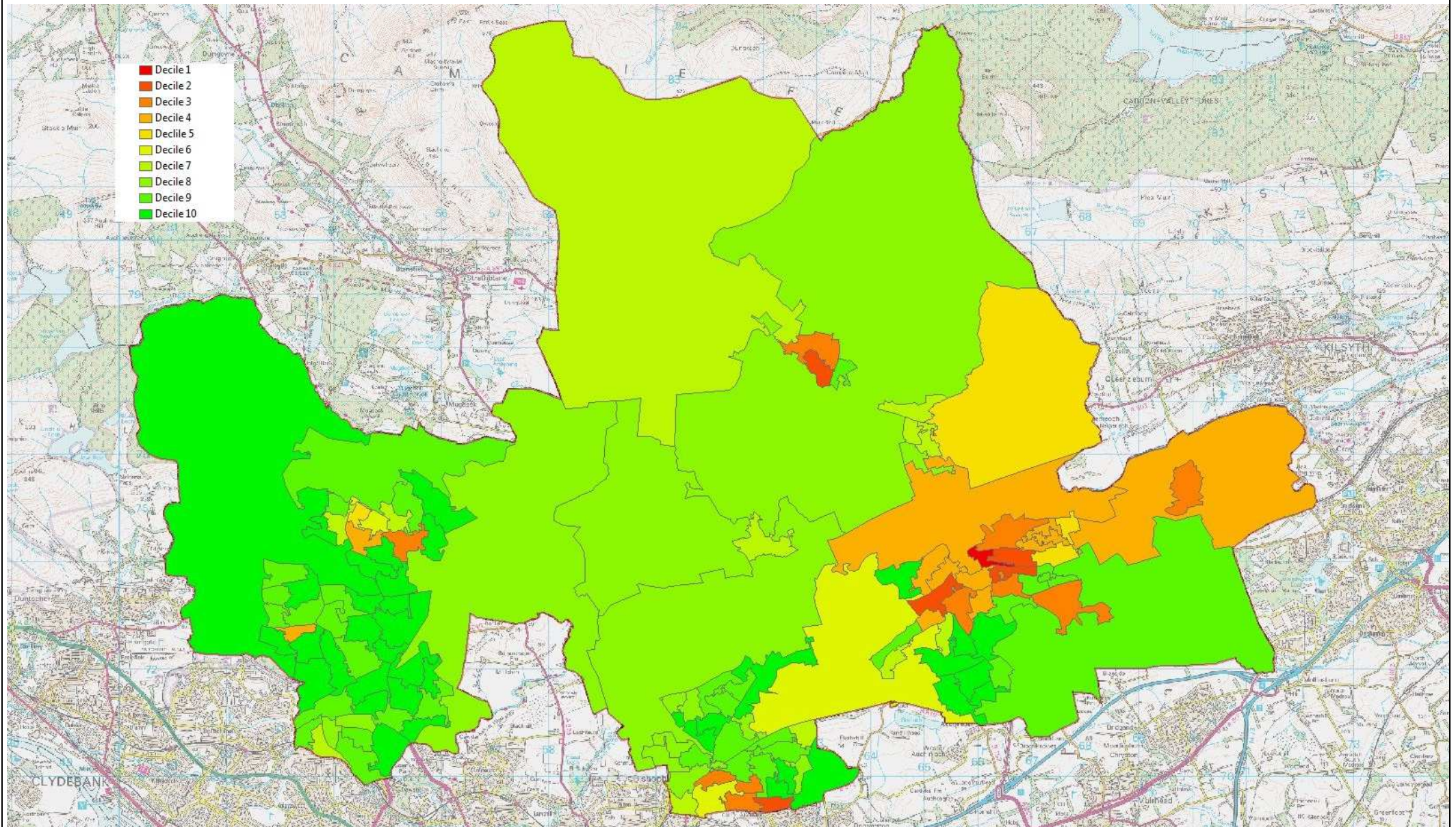


- The majority of East Dunbartonshire datazones (53%) are in the least deprived in Scotland making it the local authority with the second highest number of least deprived datazones behind East Renfrewshire.
- East Dunbartonshire has 25% of datazones in the 50% most deprived nationally, half the Scottish Average.

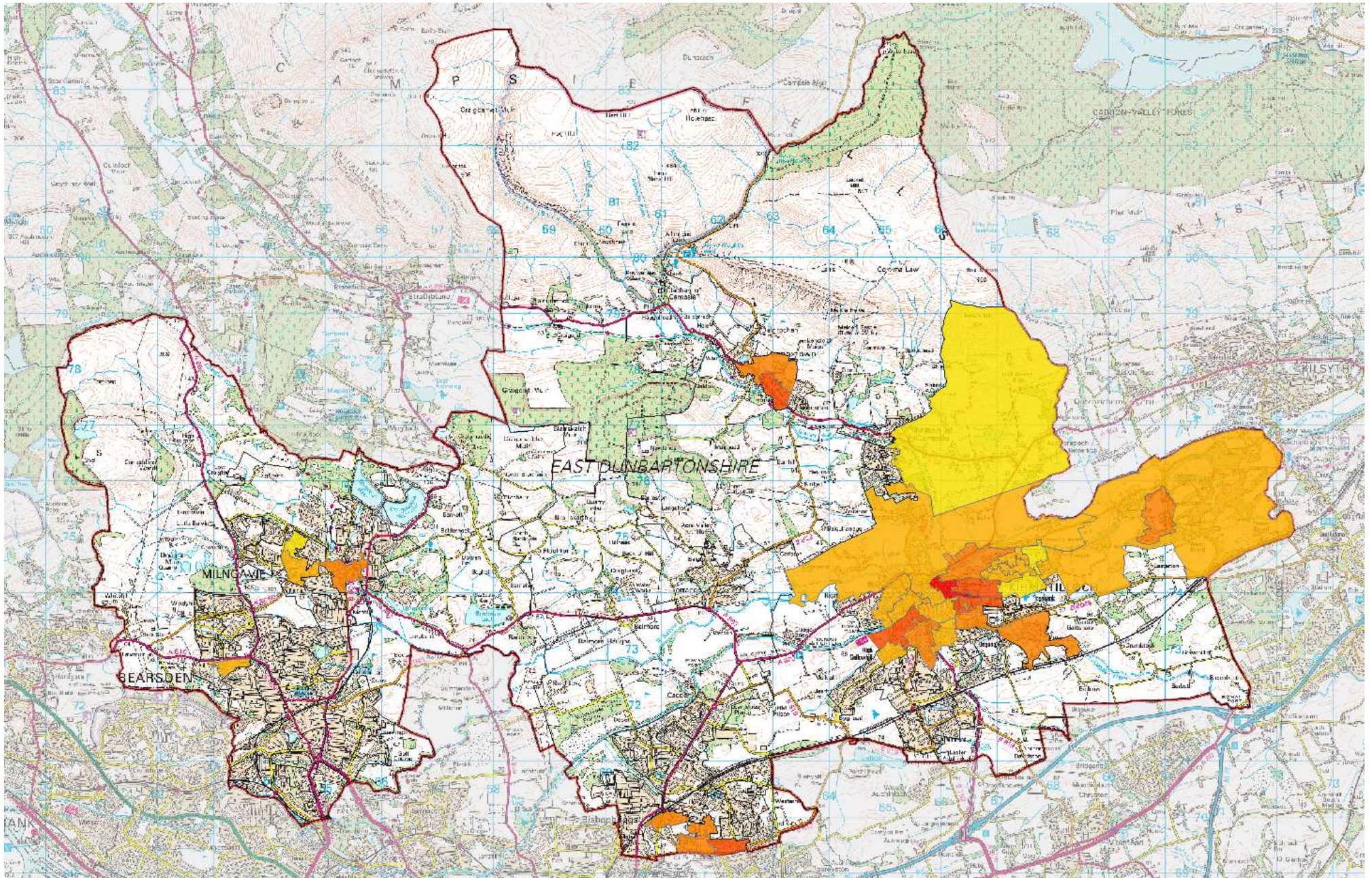


- Ward 8 is the most deprived Ward in East Dunbartonshire with 82% of datazones in the most deprived in Scotland. Two wards, Bearsden South and Bishopbriggs North and Torrance have no datazones in the 50% most deprived nationally.

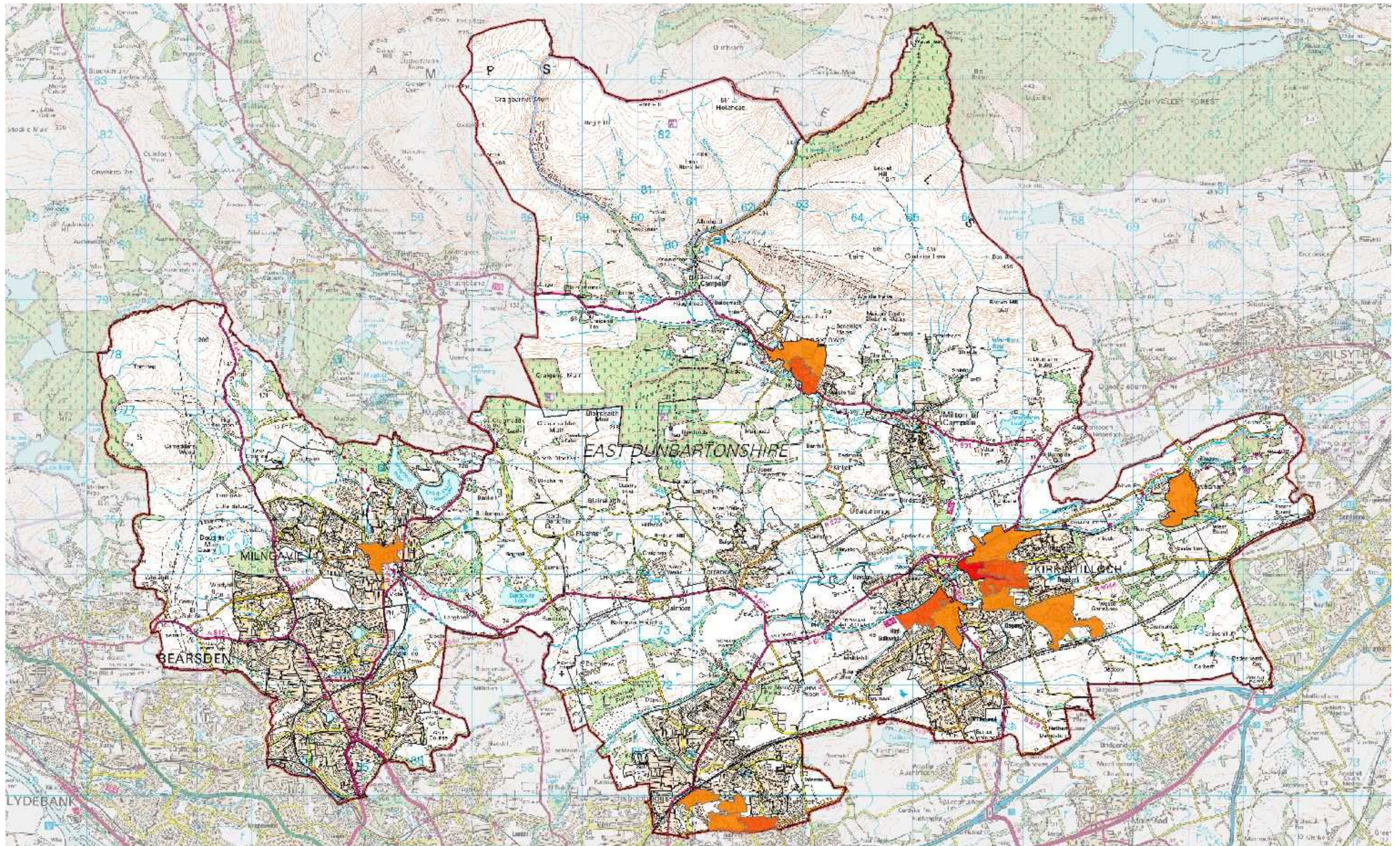
SIMD 2016 Decile Map (1 is most deprived and 10 is in least deprived)



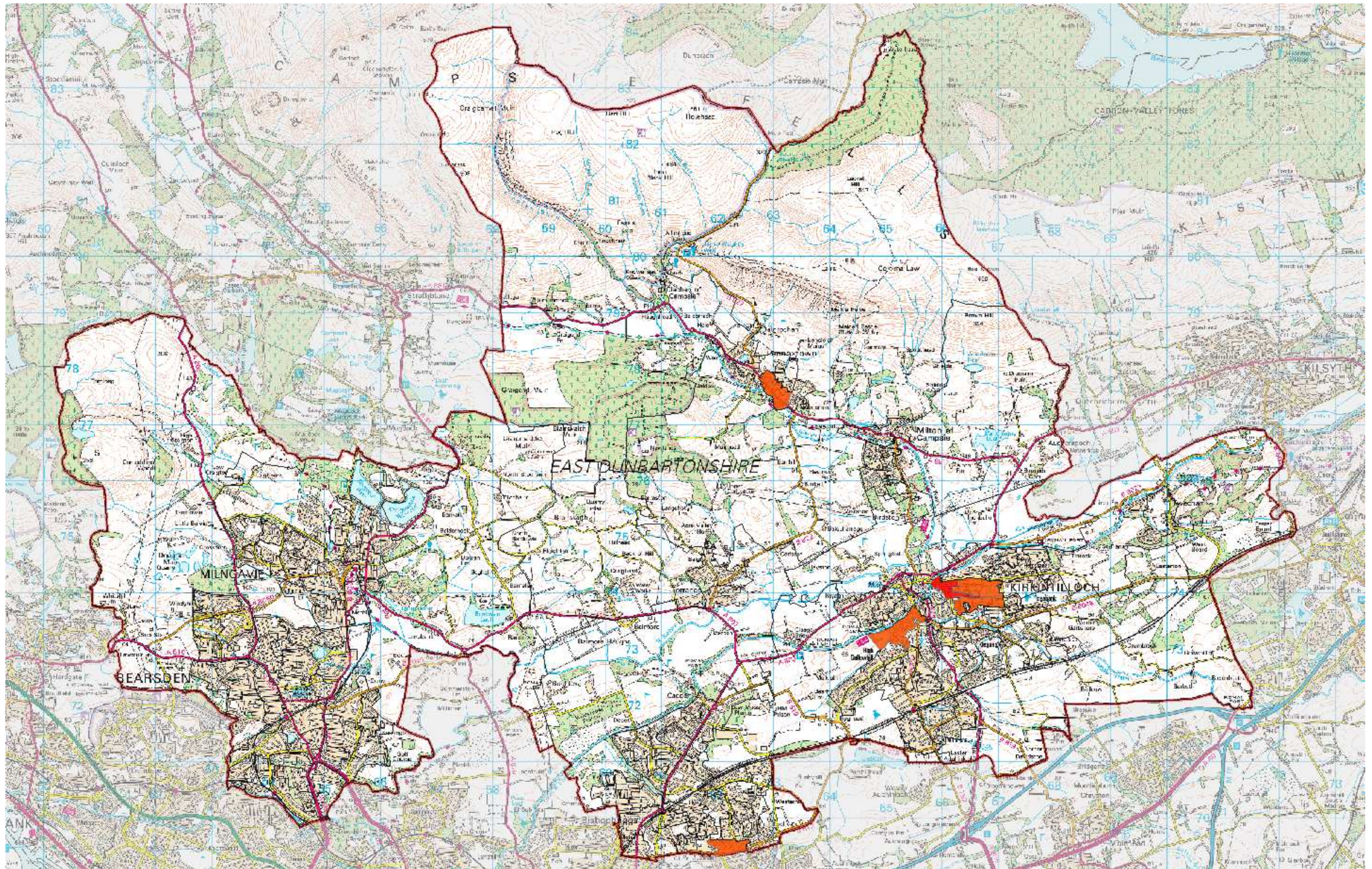
Areas in most deprived 50%



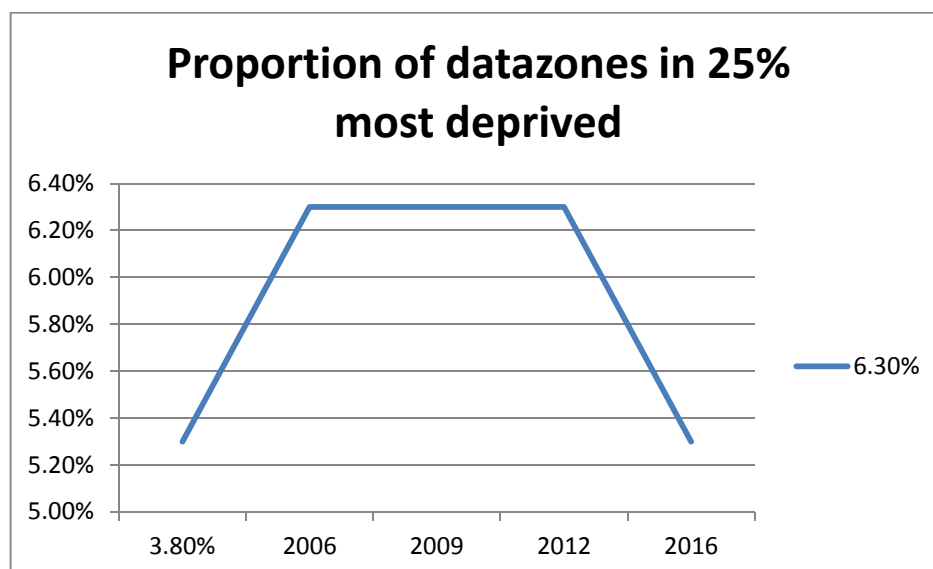
Areas in most deprived 30%



Areas in the Most Deprived 20%



Change over time from 2004



2004	2006	2009	2012	2016
5.5%	6.3%	6.3%	6.3%	5.3%

- East Dunbartonshire has roughly the same proportion of overall deprived datazones than in 2004 although the locations of these datazones have changed over time.
- Both Twechar datazones have shown marked improvement from 2004 both moving out of the 25% most deprived.
- Lennoxton has shown overall decline from 2004 but has shown improvement from 2009 onwards.
- The Auchinairn Datazone in the most deprived has remained static from 2004 demonstrating slight improvement in 2016, however, from 2016 due to boundary revisions there is a new datazone in Auchinairn which although not comparable with previous years is also in the 25% most deprived.
- The new datazone in Auchinairn in the 20% most deprived has resulted in a slight increase in the proportion of datazones in the 20% most deprived against an overall picture of decline.
- On the whole, Hillhead Datazones have remained static from 2004, but demonstrate improvement from 2012 onwards, however, for 2016 the 1500 and 1509 datazones are not directly comparable with previous years due to boundary changes.
- The datazone in Milngavie town centre has shown decline from 2004 but improvement from 2012 when it was in the most deprived 25%.
- The datazone in Harestanes has shown decline from 2004 but a slight improvement from 2012 when it was in the 25% most deprived.
- The Kirkintilloch West Datazone has shown steady decline from 2004 and it is now in the 25% most deprived in Scotland.

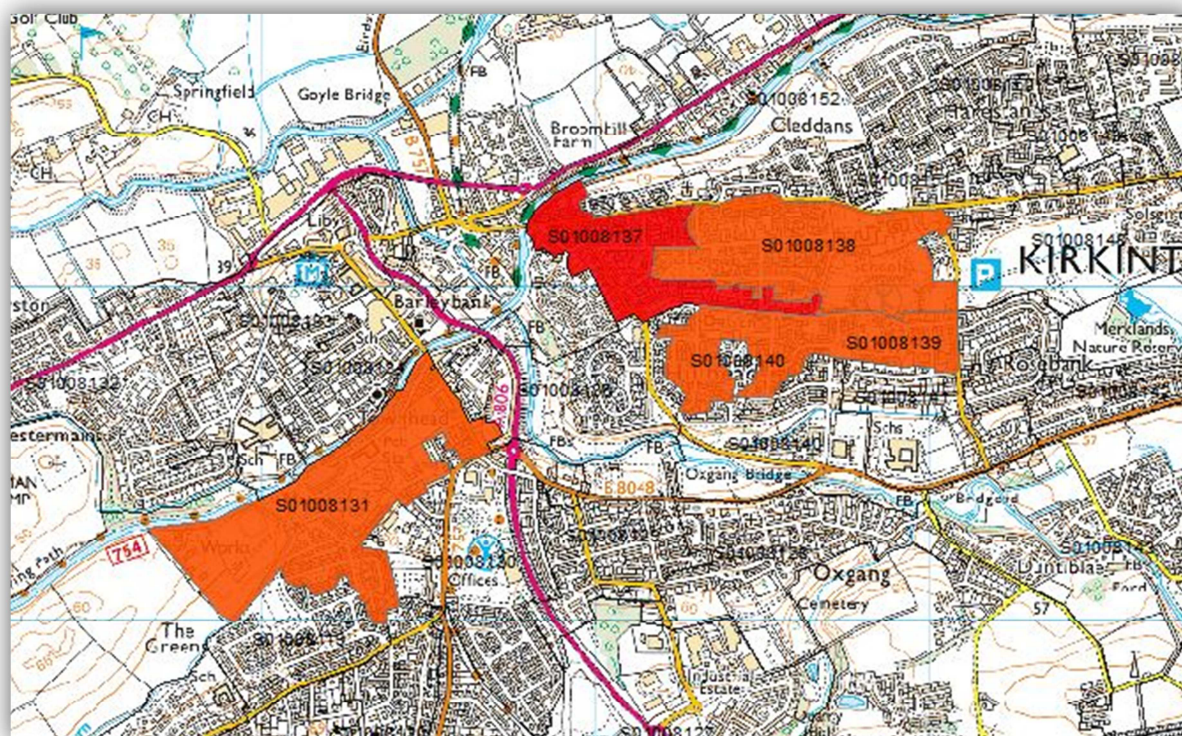
Proportion of Datazones in the most deprived

					2016
5%	0%	0.8%	0.8%	1.6%	0%
10%	1.6%	1.6%	1.6%	1.6%	0.8%
15%	3.1%	2.4%	3.1%	2.4%	1.5%
20%	3.9%	4.7%	4.7%	3.1%	3.8%
25%	5.5%	6.3%	6.3%	6.3%	5.3%

Change over time of most deprived datazones

Datazone	Intermediate Zone	2004	2004	2006	2006	2009	2009	2012	2012	2016*	2016	Change from 2004
S01001424	Auchinairn	1352	5	1523	5	1294	4	1252	4	1667	5	0
S01001500	Hillhead	965	3	872	3	921	3	1344	5	1891	6	+3
S01001509	Hillhead	1641	6	1292	4	1484	5	1444	5	1373*	4	-2
S01001512	Hillhead	591	2	581	2	344	2	183	1	458	2	0
S01001513	Hillhead	446	2	212	1	262	1	152	1	740	3	+1
S01001517	Milngavie	2207	7	1811	6	1899	6	1542	5	1982	6	-1
S01001522	Harestanes	2108	7	2123	7	1649	6	1,611	5	1995	6	-1
S01001536	Twechar	1278	4	1338	5	1505	5	1643	6	1887	6	+2
S01001537	Twechar	946	3	1016	4	1208	4	1629	6	2194	7	+4
S01001546	Lennoxton	1422	5	1135	4	946	3	722	3	1202	4	-1
S01001497	Kirkintilloch West	2350	8	2253	7	1707	6	1755	6	1149	4	-4

Hillhead and Kirkintilloch West Datazones



Hillhead

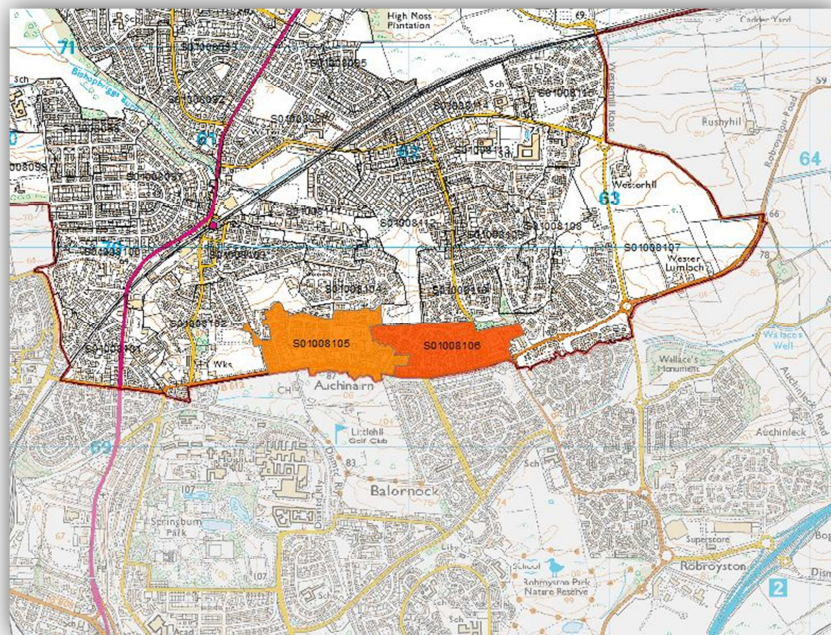
					✓
S01008138	740	2	183	1	✓
					?
S01008140*	1,891	3	1,344	3	?
					✓

*The boundaries for these datazones have changed and are now not directly comparable with 2012 equivalent

Kirkintilloch West



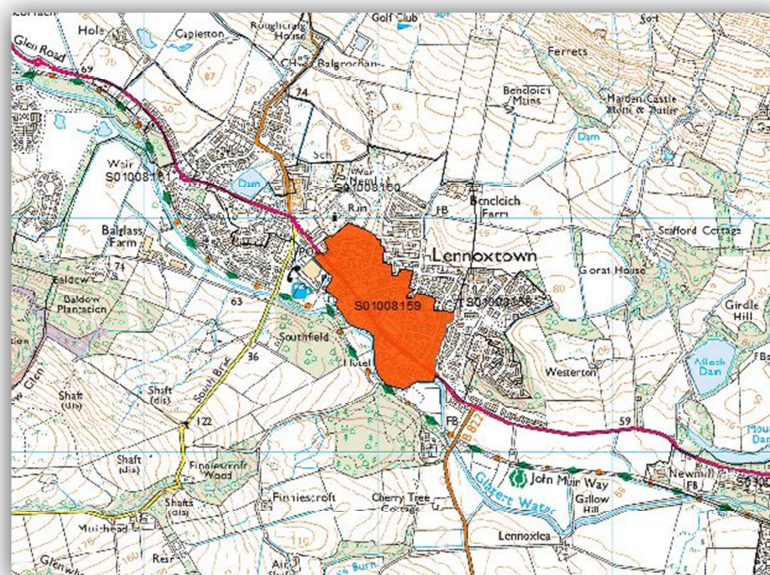
Auchinairn



	SIMD 2016 Rank		Simd	2012 Decile	Improvement
S01008106*	1,157	2	3,014	5	?
S01008105	1,667	3	1,252	2	✓

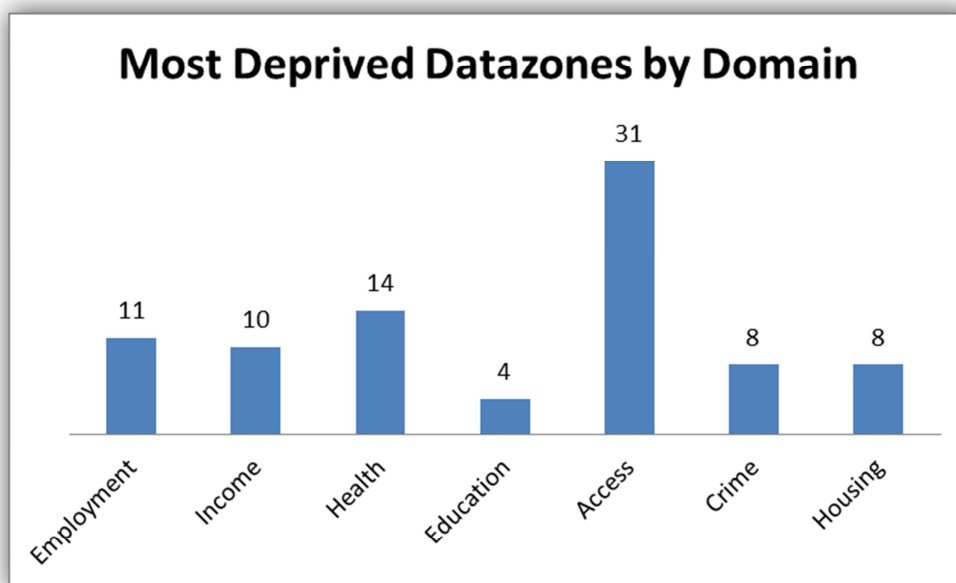
*S01008106 is a new datazone and is not directly comparable with 2012 equivalent

Lennoxtown



Datzone	SIMD 2016 Rank	Decile	Simd 2012 Rank	2012 Decile	Improvement
S01008159	1,202	2	722	2	✓

Breakdown of Datazones by Domain



Employment	Income	Health	Education	Access	Crime	Housing
11	10	14	4	31	8	8

- East Dunbartonshire is most deprived on the access domain, given the semi-rural nature of the authority, however there is no correlation between the areas that are access deprived and those that are deprived in the overall rank. Not one of the 25% most deprived areas overall is deprived in the access domain.
- All areas in the 25% most deprived overall are deprived in the Income, Employment and Health Domains.

Employment Domain (25% most deprived)

		Rank
S01008137	Hillhead	429
S01008138	Hillhead	824
S01008131	Kirkintilloch West	891
S01008159	Lennoxtown	932
S01008106	Auchinairn	1,007
S01008139	Hillhead	1,281
S01008046	Keystone and Dougalston	1,375
S01008105	Auchinairn	1,530
S01008152	Harestanes	1,595
S01008143	Rosebank and Waterside	1,622
S01008103	Auchinairn	1,680

Income Domain (25% most deprived)

		Rank
S01008137	Hillhead	500
S01008131	Kirkintilloch West	790
S01008138	Hillhead	946
S01008106	Auchinairn	1,113
S01008159	Lennoxtown	1,162
S01008105	Auchinairn	1,357
S01008139	Hillhead	1,431
S01008103	Auchinairn	1,483
S01008140	Hillhead	1,496
S01008104	Auchinairn	1,680

Health Domain (25% most deprived)

		Rank
S01008137	Hillhead	288
S01008139	Hillhead	532
S01008138	Hillhead	559
S01008106	Auchinairn	765
S01008159	Lennoxtown	1,087
S01008105	Auchinairn	1,096
S01008140	Hillhead	1,227
S01008133	Kirkintilloch West	1,327
S01008152	Harestanes	1,329
S01008160	Lennoxtown	1,487
S01008131	Kirkintilloch West	1,491
S01008104	Auchinairn	1,540
S01008136	Hillhead	1,665
S01008135	Kirkintilloch West	1,719

Education Domain (25% most deprived)

		Rank
S01008138	Hillhead	563
S01008137	Hillhead	1,009
S01008159	Lennoxtown	1,576
S01008106	Auchinairn	1,685

Housing Domain (25% most deprived)

		Rank
S01008119	Lenzie North	685
S01008137	Hillhead	728
S01008138	Hillhead	1,050
S01008131	Kirkintilloch West	1,423
S01008105	Auchinairn	1,444
S01008145	Twechar and Harestanes East	1,506
S01008130	Kirkintilloch South	1,711
S01008106	Auchinairn	1,725

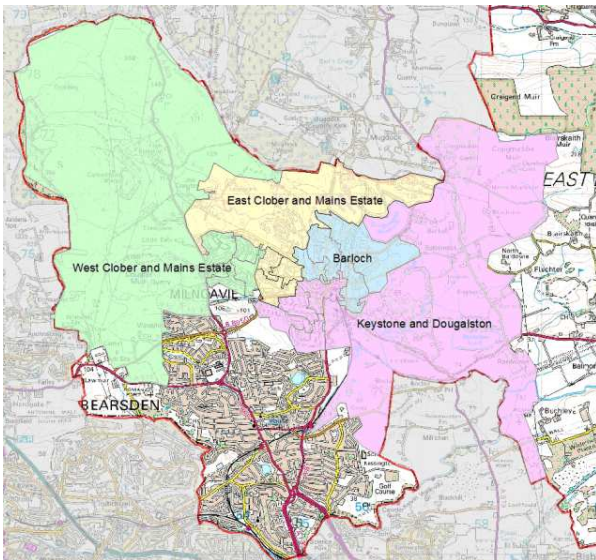
Crime Domain (25% most deprived)

		Rank
S01008099	Bishopbriggs West and Cadder	107
S01008134	Kirkintilloch West	571
S01008137	Hillhead	761
S01008159	Lennoxtown	1,162
S01008135	Kirkintilloch West	1,191
S01008138	Hillhead	1,208
S01008094	Bishopbriggs West and Cadder	1,324
S01008131	Kirkintilloch West	1,743

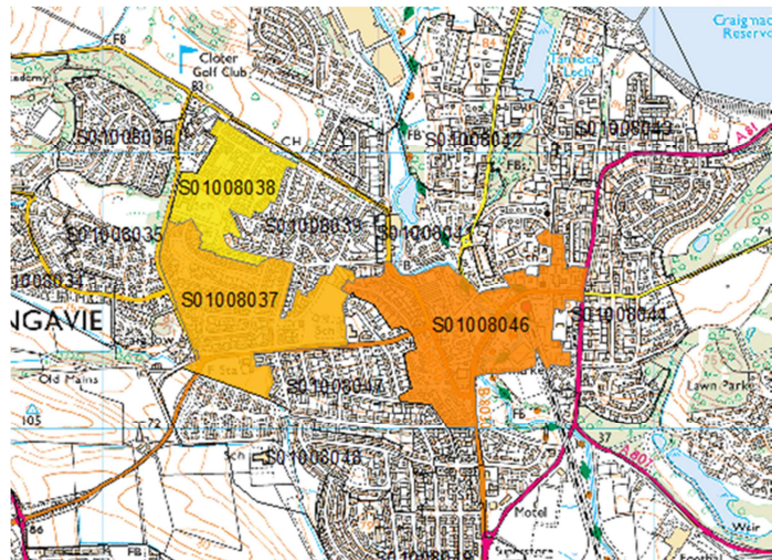
Access Domain (25% most deprived)

		Rank
Data Zone	Intermediate Zone	Access domain 2016 rank
S01008146	Twechar and Harestanes East	380
S01008144	Rosebank and Waterside	596
S01008153	Milton of Campsie	690
S01008070	Westerton West	747
S01008058	North Castlehill and Thorn	757
S01008155	Milton of Campsie	798
S01008045	Keystone and Dougalston	852
S01008147	Twechar and Harestanes East	878
S01008050	Kilmardinny East	886
S01008091	Bishopbriggs North and Kenmure	909
S01008085	Torrance and Balmore	922
S01008033	West Clober and Mains Estate	1,077
S01008148	Twechar and Harestanes East	1,083
S01008071	Westerton East	1,097
S01008061	North Castlehill and Thorn	1,163
S01008073	Westerton East	1,194
S01008072	Westerton East	1,219
S01008145	Twechar and Harestanes East	1,238
S01008057	Kilmardinny West	1,281
S01008043	Barloch	1,292
S01008126	Lenzie South	1,341
S01008154	Milton of Campsie	1,377
S01008055	Kilmardinny West	1,385
S01008162	Lennoxton	1,411
S01008161	Lennoxton	1,415
S01008040	East Clober and Mains Estate	1,435
S01008149	Harestanes	1,495
S01008060	North Castlehill and Thorn	1,532
S01008084	Torrance and Balmore	1,539
S01008150	Harestanes	1,672
S01008124	Lenzie South	1,723

Ward 1: Milngavie



Intermediate zones



Areas in 50% Most Deprived

Overview:

- The Majority of the datazones (82%) in Ward one are the least deprived in Scotland with 65% of datazones being in the least deprived 25%.
- The Ward has no datazones in the 25% most deprived in Scotland, however has 3 datazones that fall into the 50% most deprived in Scotland.
- Of the individual domains the Ward is the most deprived in terms of the Access to Services domain, with 65% of domains falling into the 50% most deprived in Scotland and 24% in the most deprived quartile. However, the areas that are most deprived overall are NOT deprived in the access domain.
- The most deprived datazone in the Ward is S01008046 which is located in Milngavie town centre, It's overall rank of 1,982 places it in the 30% most deprived of datazones in Scotland.
- The three most deprived datazones in Ward one are all located in and around Milngavie Town Centre.
- Datazone S01008046 is the most deprived datazone in Ward one. The datazone is in the 50% most deprived in all domains except access and has the worst ranking in the Employment domain.
- Datazones S01008037 and S01008038 in the East Clober and Mains Estate intermediate zone are in the 50% most deprived of Scottish datazones.
- The total population of the 3 datazones in the 50% most deprived in the Ward is 2,628 with a working age population of 1,578.
- None of the most deprived datazones in the Ward are deprived on the Access to Services domain.

Tables showing Domain Rankings of Ward 1 datazones

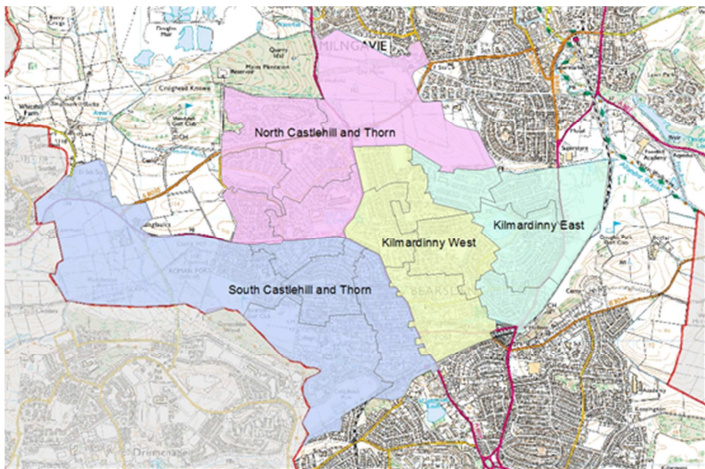
Key

	In 25% LEAST deprived of Scottish Datazones
	In 50% MOST Deprived of Scottish Datazones
	In 25% Most Deprived of Scottish Datazones

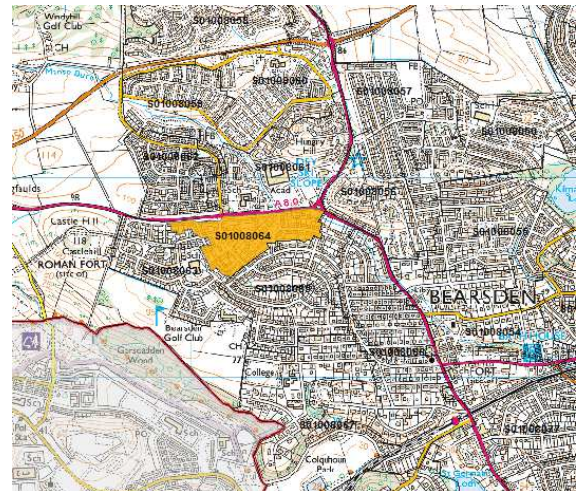
Area	DataZone	population	Wor kage	Rank	Income	Empl	Health	Edu	Hou	Access	Crime
West Clober and Mains Estate	S01008033	800	550	6,390	6,564	6,832	6,785	6,463	6,647	1,077	4,784
	S01008034	771	553	6,799	6,712	6,930	6,094	6,653	6,773	2,240	6,689
	S01008035	589	359	4,507	4,263	3,000	4,410	6,295	4,522	3,024	6,263
	S01008036	638	365	6,166	6,782	5,771	5,492	5,553	4,857	1,987	6,032
East Clober and Mains Estate	S01008037	1,003	632	2,372	2,010	2,414	2,100	2,395	2,475	4,413	4,189
	S01008038	770	486	2,981	2,285	3,368	2,002	3,951	1,921	4,814	2,987
	S01008039	879	579	3,850	3,515	3,305	3,379	4,012	2,773	4,139	4,582
	S01008040	814	463	5,642	5,671	5,362	6,114	6,051	5,316	1,435	4,393
Barloch	S01008041	688	353	4,816	4,390	3,787	4,063	6,030	5,227	4,023	3,747
	S01008042	616	341	5,707	5,248	5,311	6,092	6,727	6,392	2,306	2,849
	S01008043	1,036	540	6,478	6,404	6,515	6,584	6,831	6,700	1,292	6,308
	S01008044	967	566	6,711	6,344	6,270	6,438	6,679	6,099	3,407	4,267
Keyston e and Dougals ton	S01008045	981	533	5,238	5,659	6,282	5,305	5,790	4,182	852	2,035
	S01008046	855	460	1,982	1,846	1,375	1,851	3,267	3,337	6,485	1,758
	S01008047	702	399	6,887	6,338	6,088	6,044	6,646	5,891	5,601	6,658
	S01008048	567	323	6,422	6,526	5,671	5,467	6,686	6,802	2,584	5,528
	S01008049	864	452	6,777	6,542	6,587	6,125	6,744	6,683	2,738	6,130

Ward 2: Bearsden North

Intermediate zones



Areas in 50% Most Deprived



Overview:

- The Majority of the datazones (94%) in Ward 2 are in the least deprived 25% in Scotland with half of the datazones being in the 10% least deprived.
- The Ward has no datazones in the 25% most deprived in Scotland, however there is one datazone that falls into the 50% most deprived in Scotland.
- Of the individual domains this Ward is the most deprived in terms of the Access to Services domain, with 75% of datazones falling into the 50% most deprived in Scotland and 31% in the 25% most deprived.
- Datazone S01008054 located in Kilmardinny West is in the 50% most deprived in Scotland in the Crime domain. It is not deprived in any other domain.
- The most deprived datazone in this Ward (S01008064) is located in South Castlehill and Thorn, its overall rank of 2,377 places it in the 40% most deprived of datazones in Scotland. This datazone is in the 50% most deprived in all domains except Access to Services and Crime.
- Datazone S01008058 in North Castlehill and Thorn has the worst ranking in the Access to Services domain (757) in Ward 2. It is not deprived in any other domain.
- The total population of the datazone in the 50% most deprived in the Ward is 736 with a working age population of 477.

Tables showing Domain Rankings of Ward 2 datazones

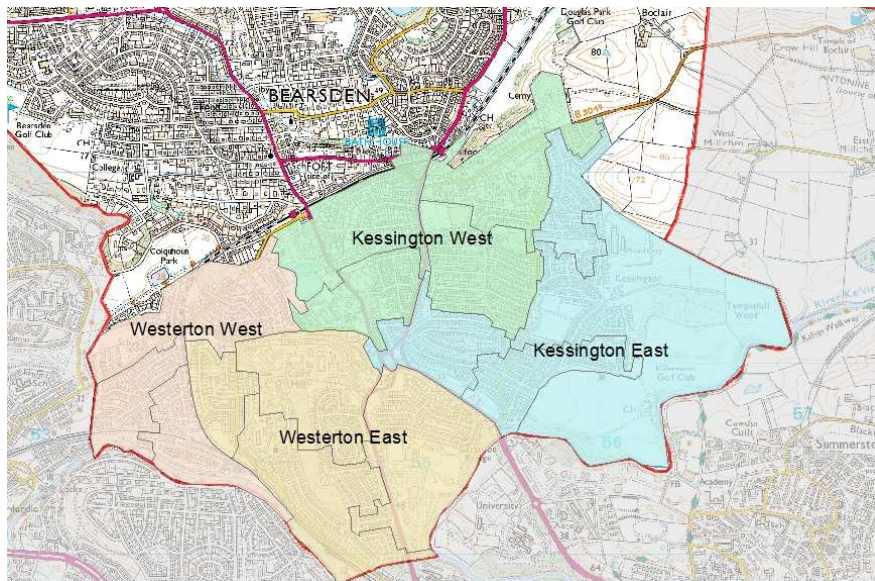
Key

	In 25% LEAST deprived of Scottish Datazones
	In 50% MOST Deprived of Scottish Datazones
	In 25% Most Deprived of Scottish Datazones

Area	DataZone	population	Wor kage	Rank	Income	Empl	Health	Edu	Hou	Access	Crime
Kilmard inny East	S01008050	628	329	<div><div></div></div> 6,300	<div><div></div></div> 6,720	<div><div></div></div> 6,516	<div><div></div></div> 6,342	<div><div></div></div> 6,815	<div><div></div></div> 5,966	<div><div></div></div> 886	<div><div></div></div> 6,320
	S01008051	863	501	<div><div></div></div> 6,490	<div><div></div></div> 6,549	<div><div></div></div> 6,158	<div><div></div></div> 5,955	<div><div></div></div> 6,923	<div><div></div></div> 6,460	<div><div></div></div> 1,764	<div><div></div></div> 5,904
	S01008052	821	501	<div><div></div></div> 6,617	<div><div></div></div> 6,561	<div><div></div></div> 6,274	<div><div></div></div> 6,407	<div><div></div></div> 6,772	<div><div></div></div> 6,816	<div><div></div></div> 1,988	<div><div></div></div> 5,822
	S01008053	615	318	<div><div></div></div> 6,968	<div><div></div></div> 6,751	<div><div></div></div> 6,727	<div><div></div></div> 6,321	<div><div></div></div> 6,642	<div><div></div></div> 6,005	<div><div></div></div> 5,156	<div><div></div></div> 6,295
Kilmard inny West	S01008054	804	414	<div><div></div></div> 5,860	<div><div></div></div> 5,135	<div><div></div></div> 4,864	<div><div></div></div> 4,545	<div><div></div></div> 6,878	<div><div></div></div> 6,379	<div><div></div></div> 6,035	<div><div></div></div> 3,252
	S01008055	1,187	688	<div><div></div></div> 6,609	<div><div></div></div> 6,490	<div><div></div></div> 6,683	<div><div></div></div> 6,859	<div><div></div></div> 6,922	<div><div></div></div> 6,788	<div><div></div></div> 1,385	<div><div></div></div> 6,111
	S01008056	774	408	<div><div></div></div> 6,079	<div><div></div></div> 5,151	<div><div></div></div> 6,268	<div><div></div></div> 4,676	<div><div></div></div> 6,890	<div><div></div></div> 4,702	<div><div></div></div> 3,057	<div><div></div></div> 5,475
	S01008057	957	544	<div><div></div></div> 6,193	<div><div></div></div> 6,459	<div><div></div></div> 6,039	<div><div></div></div> 6,216	<div><div></div></div> 6,643	<div><div></div></div> 5,818	<div><div></div></div> 1,281	<div><div></div></div> 5,617
North Castlehi ll & Thorn	S01008058	867	571	<div><div></div></div> 6,082	<div><div></div></div> 6,277	<div><div></div></div> 6,410	<div><div></div></div> 6,408	<div><div></div></div> 6,783	<div><div></div></div> 6,604	<div><div></div></div> 757	<div><div></div></div> 6,717
	S01008059	667	395	<div><div></div></div> 6,274	<div><div></div></div> 5,865	<div><div></div></div> 6,192	<div><div></div></div> 6,234	<div><div></div></div> 5,771	<div><div></div></div> 6,373	<div><div></div></div> 1,992	<div><div></div></div> 6,935
	S01008060	882	532	<div><div></div></div> 6,430	<div><div></div></div> 6,494	<div><div></div></div> 6,075	<div><div></div></div> 6,454	<div><div></div></div> 6,639	<div><div></div></div> 6,288	<div><div></div></div> 1,532	<div><div></div></div> 6,558
	S01008061	937	514	<div><div></div></div> 5,645	<div><div></div></div> 5,552	<div><div></div></div> 6,228	<div><div></div></div> 4,913	<div><div></div></div> 6,592	<div><div></div></div> 4,656	<div><div></div></div> 1,163	<div><div></div></div> 4,723
	S01008062	860	500	<div><div></div></div> 6,054	<div><div></div></div> 6,141	<div><div></div></div> 5,665	<div><div></div></div> 5,878	<div><div></div></div> 5,719	<div><div></div></div> 4,652	<div><div></div></div> 2,252	<div><div></div></div> 5,199
South Castlehi ll & Thorn	S01008063	910	527	<div><div></div></div> 6,361	<div><div></div></div> 5,913	<div><div></div></div> 5,977	<div><div></div></div> 6,492	<div><div></div></div> 6,572	<div><div></div></div> 6,136	<div><div></div></div> 1,923	<div><div></div></div> 6,733
	S01008064	736	477	<div><div></div></div> 2,377	<div><div></div></div> 1,811	<div><div></div></div> 2,188	<div><div></div></div> 2,572	<div><div></div></div> 3,066	<div><div></div></div> 2,499	<div><div></div></div> 4,058	<div><div></div></div> 4,362
	S01008065	972	610	<div><div></div></div> 6,602	<div><div></div></div> 6,381	<div><div></div></div> 6,148	<div><div></div></div> 6,458	<div><div></div></div> 6,449	<div><div></div></div> 6,767	<div><div></div></div> 2,422	<div><div></div></div> 5,646
	S01008066	943	534	<div><div></div></div> 6,954	<div><div></div></div> 6,704	<div><div></div></div> 6,292	<div><div></div></div> 6,738	<div><div></div></div> 6,951	<div><div></div></div> 6,831	<div><div></div></div> 5,663	<div><div></div></div> 4,557

Ward 3: Bearsden South

Intermediate zones



Overview:

- The Majority of the datazones (94%) in Ward 3 are in the least deprived 25% in Scotland. Nearly half (47%) of Datazones in this Ward are in the 10% least deprived in Scotland.
- This Ward has no datazones in the 25% or 50% most deprived in Scotland.
- Of the individual domains Ward 3 is the most deprived in terms of the Access to Services domain, with 65% of datazones falling into the 50% most deprived and 23% in the most deprived 25% in Scotland.
- Datazone S1008070, located in Westerton West, has the worst ranking in the Access to Services domain (747). It is not deprived in any of the other domains.
- Datazone S01008069, located in Westerton West, is in the 50% most deprived in Scotland in the Crime domain. It is not deprived in any of the other domains.
- There are five datazones in this Ward that are not deprived overall or in any of the individual domains. Four of these datazones make up the intermediate zone of Kessington West and one datazone is located in Westerton West.
- The total population of this Ward is 13,388 with a working age population of 7,680.

Tables showing Domain Rankings of Ward 3 datazones

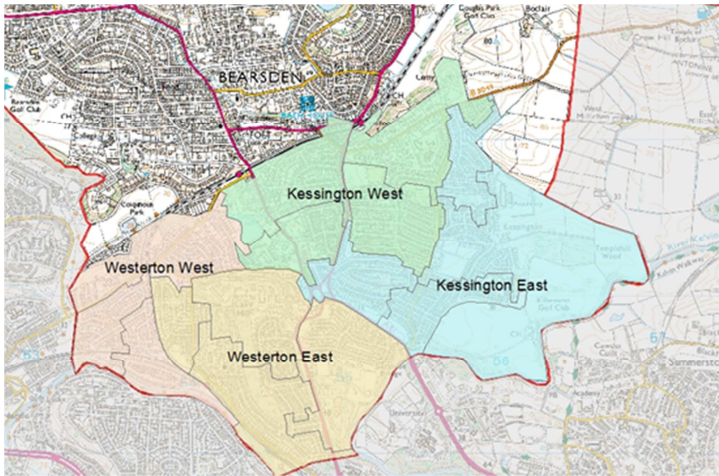
Key

	In 25% LEAST deprived of Scottish Datazones
	In 50% MOST Deprived of Scottish Datazones
	In 25% Most Deprived of Scottish Datazones

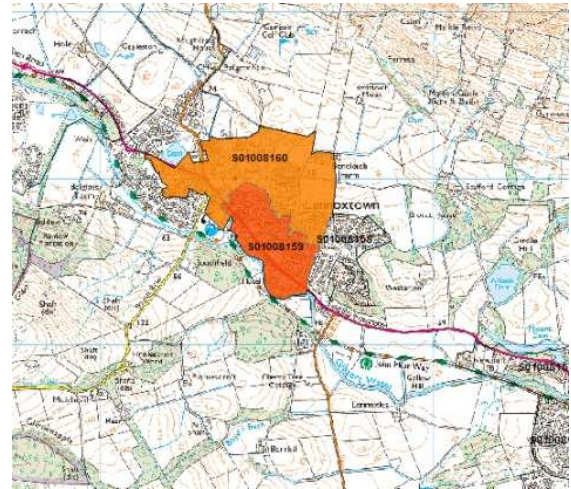
Area	DataZone	population	Wor kage	Rank	Income	Empl	Health	Edu	Hou	Access	Crime
South Castlehill & Thorn	S01008067	683	391	<div></div> 6,571	<div></div> 6,441	<div></div> 6,286	<div></div> 6,580	<div></div> 6,847	<div></div> 6,717	<div></div> 2,371	3,505
	S01008068	1,018	633	<div></div> 6,173	<div></div> 5,850	<div></div> 5,453	4,888	<div></div> 6,289	<div></div> 5,621	4,004	5,134
Westerton West	S01008069	961	588	<div></div> 5,778	<div></div> 5,089	<div></div> 5,250	4,697	<div></div> 6,523	4,434	4,817	<div></div> 3,196
	S01008070	912	580	<div></div> 4,372	<div></div> 4,425	<div></div> 4,469	4,435	<div></div> 5,453	3,630	<div></div> 747	<div></div> 5,534
Westerton East	S01008071	672	432	<div></div> 5,244	<div></div> 4,813	<div></div> 5,542	5,099	<div></div> 6,555	<div></div> 6,316	<div></div> 1,097	4,625
	S01008072	887	517	<div></div> 5,479	<div></div> 5,621	<div></div> 6,390	4,322	<div></div> 5,254	<div></div> 5,922	<div></div> 1,219	4,812
	S01008073	462	276	<div></div> 5,968	<div></div> 6,292	<div></div> 5,942	5,634	<div></div> 6,677	<div></div> 6,232	<div></div> 1,194	5,131
	S01008074	1,067	604	<div></div> 5,892	<div></div> 5,826	<div></div> 5,895	5,032	<div></div> 6,526	<div></div> 6,236	<div></div> 1,814	4,520
	S01008075	619	320	<div></div> 6,702	<div></div> 5,935	<div></div> 6,599	6,457	<div></div> 6,863	<div></div> 6,184	<div></div> 2,578	<div></div> 6,590
Kessington West	S01008076	678	282	<div></div> 6,689	<div></div> 6,471	<div></div> 6,061	5,005	<div></div> 6,655	<div></div> 5,860	4,073	<div></div> 6,109
	S01008077	797	426	<div></div> 6,920	<div></div> 6,590	<div></div> 6,378	6,371	<div></div> 6,607	<div></div> 6,873	<div></div> 6,155	3,757
	S01008078	848	467	<div></div> 6,412	<div></div> 5,496	<div></div> 5,606	5,973	<div></div> 6,859	<div></div> 6,334	4,093	<div></div> 4,932
	S01008079	899	468	<div></div> 6,696	<div></div> 5,924	<div></div> 5,375	6,249	<div></div> 6,703	<div></div> 6,611	5,146	<div></div> 6,727
Kessington East	S01008080	714	407	<div></div> 5,966	<div></div> 5,494	<div></div> 5,236	5,223	<div></div> 6,393	<div></div> 5,950	<div></div> 3,047	<div></div> 6,169
	S01008081	600	361	<div></div> 6,491	<div></div> 5,961	<div></div> 6,504	6,202	<div></div> 6,508	<div></div> 6,458	<div></div> 2,298	4,961
	S01008082	854	501	<div></div> 5,893	<div></div> 5,800	<div></div> 5,223	5,733	<div></div> 6,249	<div></div> 6,364	<div></div> 2,347	4,522
	S01008083	717	427	<div></div> 6,432	<div></div> 6,368	<div></div> 5,610	5,566	<div></div> 6,708	<div></div> 6,405	<div></div> 2,596	<div></div> 6,667

Ward 4: Campsie and Kirkintilloch North

Intermediate zones



Areas in 30% Most Deprived



Overview:

- Ward 4 has 21% of datazones in the 50% least deprived in Scotland and 43% in the 50% most deprived in Scotland. This Ward has one datazone in the 25% most deprived in Scotland.
- Of the individual domains the Ward is most deprived in terms of the Access to Services domain, with 57% of datazones falling in to the 50% most deprived in Scotland and 36% of datazones falling into the 25% most deprived in Scotland.
- The most deprived datazone in the Ward (S01008159) is located in Lennoxton. Its overall rank of 1,202 places it in the 20% most deprived in Scotland. This datazone is in 50% most deprived in six of the seven domains and has the worst ranking in the Employment domain (932). It is not deprived in the Access to Services domain.
- Datazone S01008134, located in Kirkintilloch West, is in the 25% most deprived in Scotland in the Crime domain, with a rank of 571 it falls within the 10% most deprived (Crime domain). There are two other datazones S01008135, located in Kirkintilloch West, and S01008159, located in Lennoxton, that are also in the 25% most deprived in Scotland in the Crime domain.
- Six datazones in this Ward are in the 50% most deprived in the Health domain. Three of these datazones are located in Kirkintilloch West, one in Milton of Campsie and two in Lennoxton.
- The total population of the six datazones in the 50% most deprived in the Ward is 5,198 with a working age population of 3,240.

Tables showing Domain Rankings of Ward 4 datazones

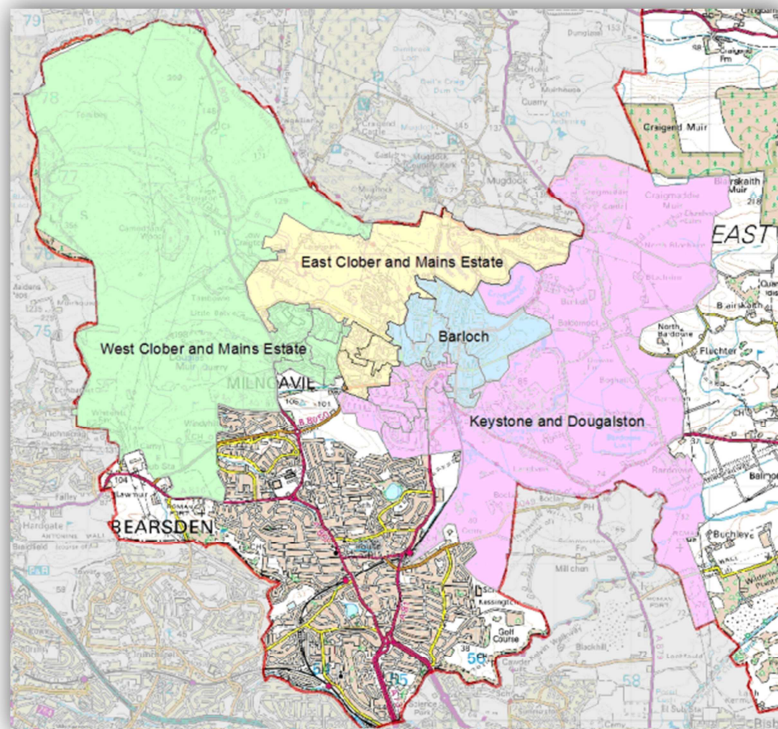
Key

	In 25% LEAST deprived of Scottish Datazones
	In 50% MOST Deprived of Scottish Datazones
	In 25% Most Deprived of Scottish Datazones

Area	DataZone	popul ation	Work age	Rank	Income	Empl	Health	Edu	Hou	Access	Crime
Kirkintilloch West	S01008132	1,115	605								
	S01008133	618	357								
	S01008134	563	385								
	S01008135	1,163	719								
Milton of Campsie	S01008153	883	547								
	S01008154	799	443								
	S01008155	696	464								
	S01008156	910	591								
	S01008157	726	491								
Lennox town	S01008158	672	499								
	S01008159	972	601								
	S01008160	972	587								
	S01008161	1,038	715								
	S01008162	1,093	691								

Ward 5: Bishopbriggs North and Torrance

Intermediate zones



Overview:

- All of the datazones (100%) in Ward 5 are among the least deprived in Scotland, with 59% of datazones being in the least deprived 25%.
- The Ward has no datazones in the 25% most deprived in Scotland, nor in the 50% most deprived in Scotland.
- Of the individual Domains, the Ward is most deprived in terms of the Access to Services domain, with 10 datazones (59%) falling into the 50% most deprived in Scotland and 3 (18%) in the most deprived quartile.
- The lowest ranked datazone in the Ward is S01008084 which is located in Torrance. However, this is only relative to its position comparative to the rest of the Ward, as its overall ranking of 4,720 still places it in the least deprived datazones in Scotland.
- The Crime domain has the poorest ranking in the Ward within the Bishopbriggs West and Cadder area (datazone S01008099). This datazone and another (S01008094) within the Bishopbriggs West and Cadder intermediate zone fall into the 25% most deprived of Scottish datazones, while a third datazone in this area is in the 50% most deprived.
- Datazone S01008098 in the Bishopbriggs West and Cadder area falls into the 50% most deprived in Scotland in the Housing domain and is the only datazone in the Ward to fall into that category. The other datazones in the Ward are among the least deprived in Scotland.

Tables showing Domain Rankings of Ward 5 Datazones

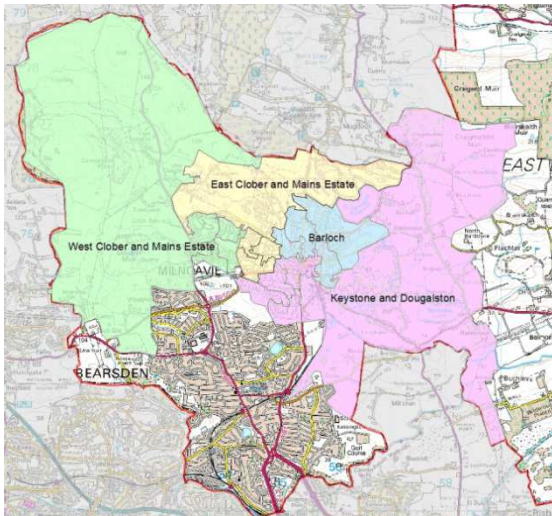
Key

	In 25% LEAST deprived of Scottish Datazones
	In 50% MOST Deprived of Scottish Datazones
	In 25% Most Deprived of Scottish Datazones

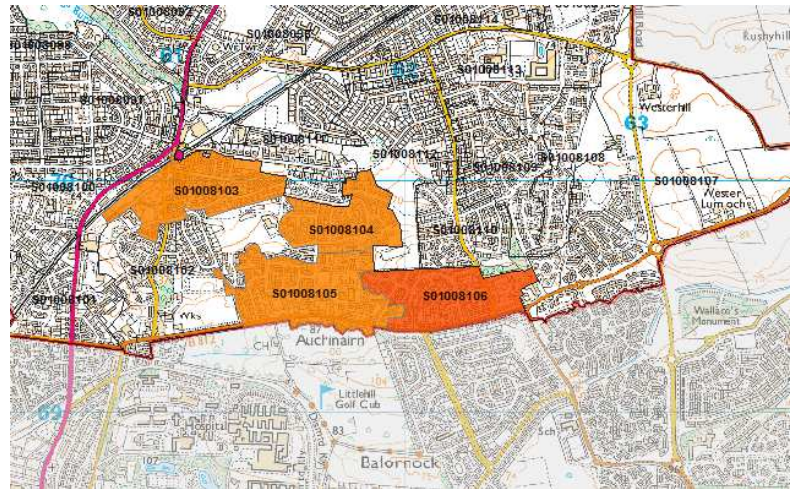
Area	Datazone	Population	Wor kage	Rank	Incom e	Empl	Health	Edu	Hou	Access	Crime
Torrance and Balmore	S01008084	827	497	4,720	3,965	4,890	4,721	5,917	3,947	1,539	4,640
	S01008085	910	596	5,139	5,405	4,816	5,684	6,524	6,154	922	3,627
	S01008086	1,093	717	5,528	5,559	5,030	4,466	6,063	5,675	2,399	4,566
Bishopbriggs North and Kenmure	S01008087	814	462	6,187	5,923	5,878	5,729	6,422	6,464	2,557	4,183
	S01008088	874	497	5,769	5,682	5,780	4,627	5,708	5,821	2,217	5,236
	S01008089	657	415	5,998	6,271	5,546	5,826	6,184	4,911	1,885	4,858
	S01008090	745	451	5,223	4,600	4,447	5,206	5,567	5,168	2,576	6,677
	S01008091	341	203	5,409	6,170	5,418	4,204	6,119	6,936	909	6,116
	S01008092	897	484	6,363	5,422	6,275	5,301	6,834	5,971	3,183	5,508
	S01008093	820	477	6,373	6,035	5,900	4,979	6,629	6,036	3,204	5,587
	S01008094	1,459	1,165	6,476	6,937	6,872	6,715	6,064	6,301	2,412	1,324
Bishopbriggs West and Cadder	S01008095	709	411	4,892	4,483	4,708	4,026	5,265	4,816	2,189	6,158
	S01008096	782	421	5,879	5,137	5,700	4,232	6,116	5,059	4,491	4,518
	S01008097	596	326	5,810	4,640	5,906	4,013	6,060	5,575	5,949	3,562
	S01008098	740	462	5,176	4,844	4,467	4,772	5,389	3,483	3,399	4,147
	S01008099	529	351	5,179	6,070	5,541	4,718	5,425	4,885	4,600	107
	S01008100	918	531	5,186	4,078	4,758	4,127	6,244	6,523	5,869	2,281

Ward 6: Bishopbriggs South

Intermediate zones



Areas in 50% Most Deprived



Overview:

- The majority of the datazones (73%) in Ward 6 are among the least deprived in Scotland, with 53% of datazones being in the least deprived 25%.
- However, the Ward has two datazones (S01008105 and S01008106) in the 25% most deprived in Scotland and two datazones (S01008103 and S01008104) in the 50% most deprived in Scotland. All four of these datazones are located in Auchinairn.
- In terms of the individual Domains, there is a very noticeable disparity between most of the datazones in the Auchinairn area and those in the rest of the Ward, with almost all of the lower ranked datazones across all the Domains falling in the Auchinairn area.
- Of the individual Domains, the Ward is most deprived in terms of the Income domain, with four datazones (27%) ranked in the 25% most deprived in Scotland. However this level of deprivation only applies to the Auchinairn area, as there is a stark contrast between this area and the remaining datazones which, by contrast, rank among the least deprived in Scotland in terms of income.
- There are five datazones which do not fare well in the Health domain - three of these are ranked among the 25% most deprived in Scotland, while another two are in the 50% most deprived. These are again in the Auchinairn area.
- Across the domains of Income, Employment, Health, Education, Housing and Crime, four of the datazones within the Auchinairn area are in either the 25% or 50% most deprived in Scotland. However, these same datazones were in the least deprived in Scotland in the Access to Services domain.

Tables showing Domain Rankings of Ward 6 Datazones

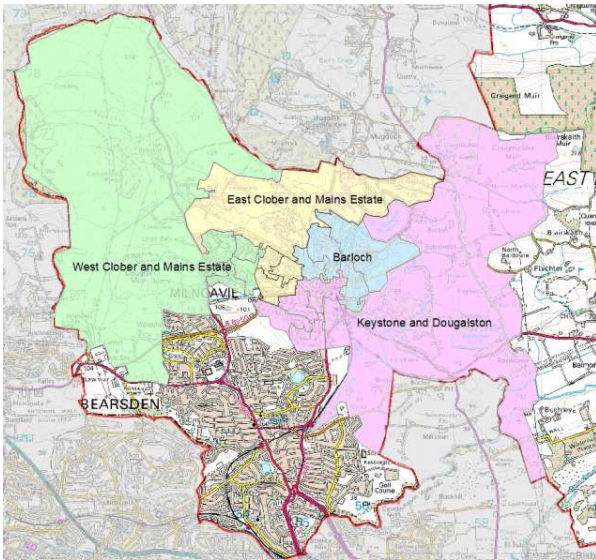
Key

	In 25% LEAST deprived of Scottish Datazones
	In 50% MOST Deprived of Scottish Datazones
	In 25% Most Deprived of Scottish Datazones

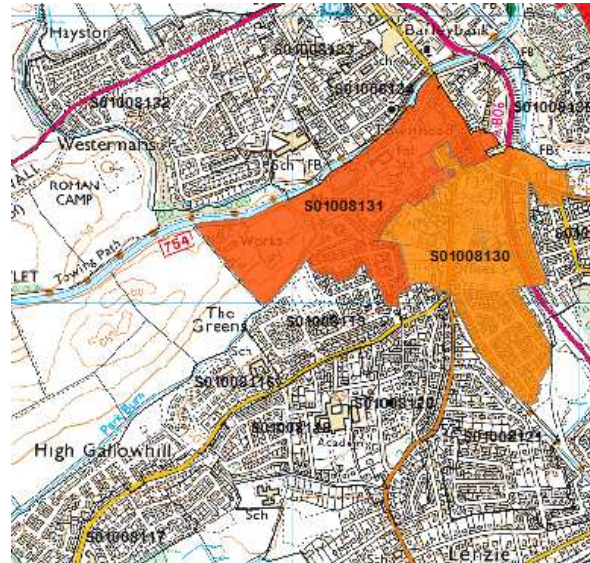
Area	Datazone	Population	Workage	Rank	Income	Empl	Health	Edu	Hou	Access	Crime
Bishopbriggs West and Cadder	S01008101	833	564	4,760	3,981	4,118	4,262	5,687	4,730	5,061	2,320
	S01008102	805	503	3,955	3,799	3,652	2,366	4,424	2,529	4,452	4,578
Auchinairn	S01008103	672	445	2,038	1,483	1,680	1,828	3,410	2,925	6,392	3,261
	S01008104	847	552	1,913	1,680	1,977	1,540	2,166	1,904	4,084	3,117
	S01008105	1,076	722	1,667	1,357	1,530	1,096	3,211	1,444	5,373	2,125
	S01008106	746	479	1,157	1,113	1,007	765	1,685	1,725	4,586	2,484
	S01008107	1,127	755	6,426	6,105	6,781	6,788	4,946	6,295	2,170	5,333
	S01008108	701	476	5,491	5,811	4,499	4,840	4,975	5,273	2,683	6,657
Woodhill East	S01008109	920	579	6,466	6,309	5,721	5,420	5,799	4,310	3,900	6,407
	S01008110	882	568	6,497	6,298	6,297	5,297	5,155	5,928	3,948	5,255
	S01008111	858	482	6,271	5,768	5,855	4,675	6,306	5,191	4,112	5,420
Woodhill West	S01008112	800	460	6,133	5,371	5,425	4,788	5,549	5,871	5,555	6,282
	S01008113	866	518	5,826	5,201	4,911	5,327	5,835	5,395	4,448	4,746
	S01008114	648	387	5,863	5,122	5,202	4,758	6,041	4,691	3,987	6,935
	S01008115	871	637	4,215	4,178	4,141	3,175	4,041	3,571	2,196	6,368

Ward 7: Lenzie and Kirkintilloch South

Intermediate zones



Areas in 30% Most Deprived



Overview:

- The majority of the datazones (71%) in Ward 7 are among the least deprived in Scotland, with 53% of datazones being in the least deprived 25%.
- However there are four datazones which fall into the 50% most deprived in Scotland, two in Kirkintilloch South, one in Lenzie North and one in Hillhead.
- One datazone, in Kirkintilloch West, is ranked among the 25% most deprived in Scotland. This area is in the 25% most deprived across most domains, apart from the Education domain where it sits in the 50% most deprived. The only domain in which this datazone is not deprived is in the Access to Services domain.
- Lenzie South is the least deprived intermediate zone in the Ward with all datazones among the least deprived in Scotland.
- In terms of the individual Domains, the Ward is most deprived in terms of the Access to Services domain, with six datazones falling into the 50% most deprived in Scotland and two in the 25% most deprived. The datazones most deprived in the Access to Services Domain are in the Lenzie South intermediate zone, which ranks very highly in all other Domains.
- In the Income domain, four datazones (two in Kirkintilloch South, one in Hillhead and one in Lenzie North) fall in the 50% most deprived in Scotland and one (Kirkintilloch West) is in the 25% most deprived.
- In terms of Employment and Health, the same datazones as those mentioned above are in the 50% most deprived or 25% most deprived in Scotland. However, an additional datazone within Lenzie North also falls into the 50% most deprived in these two domains.
- Datazone S01008119 in Lenzie North ranks very poorly in the Housing domain (in the 25% most deprived in Scotland), which is at odds with the other datazones in that area.

Tables showing Domain Rankings of Ward 7 Datazones

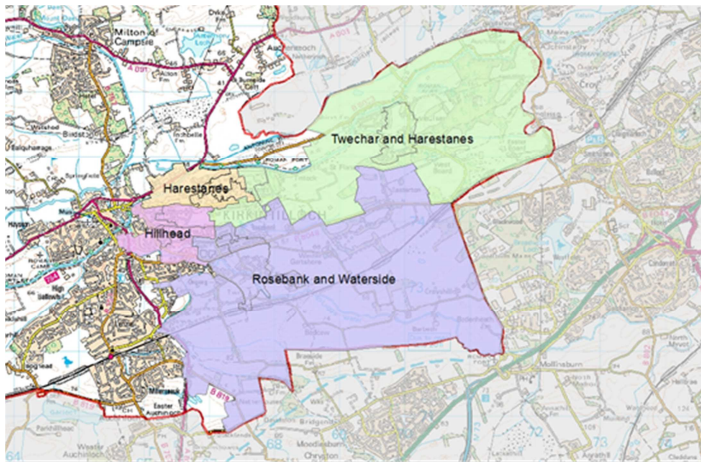
Key

	In 25% LEAST deprived of Scottish Datazones
	In 50% MOST Deprived of Scottish Datazones
	In 25% Most Deprived of Scottish Datazones

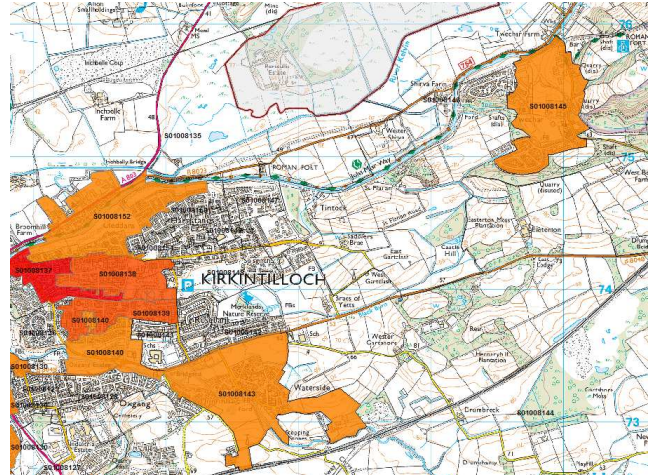
Area	Datazone	Population	Wor kage	Rank	Incom e	Empl	Healt h	Educ	Hou	Acces s	Crime
Lenzie North	S01008116	904	535	5,677	6,130	5,258	4,571	6,014	5,422	1,747	5,966
	S01008117	789	463	4,757	4,693	3,982	4,328	5,556	5,939	1,800	6,495
	S01008118	917	549	4,145	4,246	3,250	3,275	5,640	3,332	3,308	2,943
	S01008119	669	411	2,770	2,601	2,453	2,055	3,539	685	4,287	6,385
	S01008120	612	334	4,765	3,875	3,824	3,882	6,220	4,422	4,861	4,689
	S01008121	656	358	6,860	6,747	6,621	5,638	6,829	6,702	3,381	6,371
	S01008122	725	424	6,847	6,371	6,468	5,600	6,904	6,528	4,442	5,637
Lenzie South	S01008123	861	485	6,900	6,411	6,716	6,130	6,876	5,636	4,230	5,900
	S01008124	824	517	6,388	6,676	6,219	5,326	6,481	6,223	1,723	6,518
	S01008125	889	520	6,535	6,393	6,143	5,859	6,561	6,083	2,355	5,937
	S01008126	765	507	6,003	5,855	5,962	5,840	6,669	5,078	1,341	6,935
Kirkintilloch South	S01008127	659	417	6,473	6,600	6,857	5,456	6,510	6,048	2,023	3,634
	S01008128	840	526	6,210	5,643	5,217	4,864	6,528	5,518	5,186	5,150
	S01008129	872	593	2,569	2,456	1,904	2,118	3,327	2,366	5,696	4,561
	S01008130	960	660	2,071	2,072	1,794	1,962	2,539	1,711	4,060	2,427
Kirkintilloch West	S01008131	747	489	1,149	790	891	1,491	2,655	1,423	3,954	1,743

Ward 8: Kirkintilloch East and Twechar

Intermediate zones



Areas in 30% Most Deprived



Overview:

- Ward 8 is statistically the most deprived ward in East Dunbartonshire with 82% of datazones being in the top 50% most deprived nationally, compared to 25% in east Dunbartonshire as a whole. It is the only ward in East Dunbartonshire that is on average more deprived than the Scottish average (50%).
- Hillhead is the most deprived intermediate zone in the ward with 3 out of 4 datazones in the most 25% deprived nationally.
- Although Hillhead remains the most deprived area in East Dunbartonshire, however SIMD ranks in the area have improved with 2 datazones moving out of the 5% most deprived in Scotland and the majority of datazones showing less deprivation than in SIMD 2012.
- The Hillhead intermediate geography is most deprived in the Health domain which is the lowest performing domain in all 4 datazones.
- Despite being in the 50% most deprived across almost all other domains Hillhead is not deprived in the Access to Services domain
- All of the Hillhead Datazones are in the 25% most deprived in the Health domain, including the 8137 datazone which is in the 5% most deprived in Scotland on the Health domain.
- Over time since 2004 Twechar has demonstrated the most improvement with both Twechar datazones no longer in the 25% most deprived.

Tables showing Domain Rankings of Ward 8 datazones

Key

	In 25% LEAST deprived of Scottish Datazones
	In 50% MOST Deprived of Scottish Datazones
	In 25% Most Deprived of Scottish Datazones

Area	DataZone	population	Wor kage	Rank	Income	Empl	Health	Edu	Hou	Access	Crime
Hillhead	S01008136	811	506	2,436	2,401	2,102	1,665	3,588	4,142	4,858	2,245
	S01008137	918	581	458	500	429	288	1,009	728	5,007	761
	S01008138	882	602	740	946	824	559	563	1,050	4,240	1,208
	S01008139	950	626	1,373	1,431	1,281	532	2,365	2,926	3,554	3,168
Rosebank and Waterside	S01008140	637	362	1,891	1,496	1,983	1,227	2,861	2,132	4,320	3,301
	S01008141	797	498	5,874	5,988	5,419	4,486	5,568	5,740	3,226	4,774
	S01008142	781	525	6,097	6,219	5,401	5,158	5,877	5,491	2,942	5,497
	S01008143	938	594	1,795	1,796	1,622	1,767	2,581	2,030	1,921	3,011
Twechar and Harestaness East	S01008144	1,346	838	5,744	6,672	6,283	6,197	5,834	2,985	596	6,107
	S01008145	767	482	1,887	1,987	2,116	2,259	1,967	1,506	1,238	2,709
	S01008146	494	297	2,194	2,558	2,988	3,008	2,182	1,935	380	3,269
	S01008147	807	524	2,920	3,850	3,150	2,151	3,103	1,780	878	5,557
Harestaness	S01008148	704	488	3,315	4,086	2,824	3,477	4,689	4,173	1,083	2,749
	S01008149	674	430	2,241	2,459	1,925	2,170	4,154	2,791	1,495	2,614
	S01008150	900	517	2,121	2,049	2,204	1,853	3,241	1,853	1,672	3,272
	S01008151	690	448	2,182	2,127	2,160	1,870	2,982	1,875	2,707	2,831
	S01008152	1,011	566	1,955	2,358	1,595	1,329	3,149	1,899	2,462	3,103

