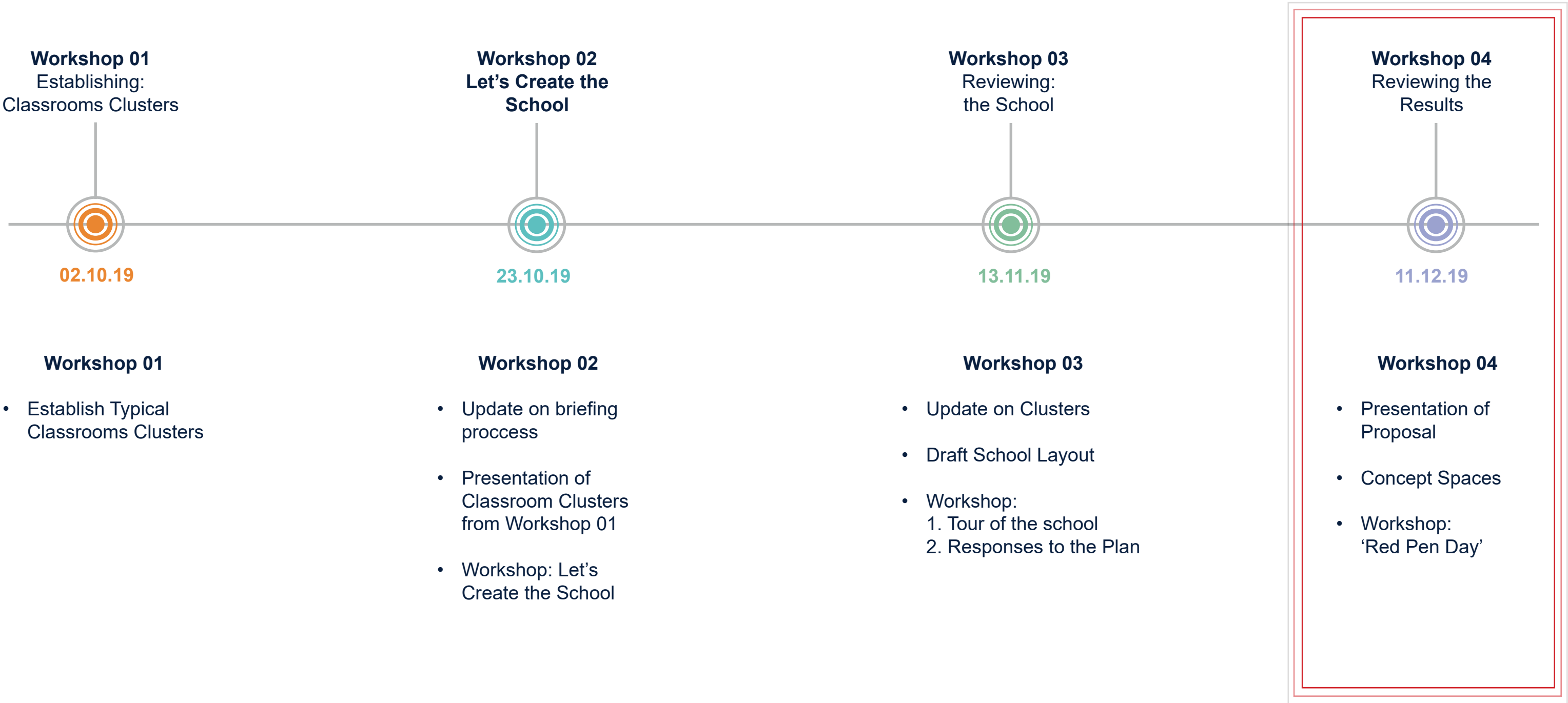


EAST DUNBARTONSHIRE ASN SCHOOL

Workshop 4 // Introduction

Key Features



Workshop 4 // What have we been up to

Workshop Outcomes - Touring the School

Key Notes

- Classroom Sizes are more generous than expected
- Small Classrooms aren't cupboards
- Sports Block should be closer to outdoor space
- Kitchen and Dining co-located
- Music to be located more within practical subjects area, away from entrance and Early Years area
- Home Economics linked with dining / community cafe area
- SPLASH POOL !!



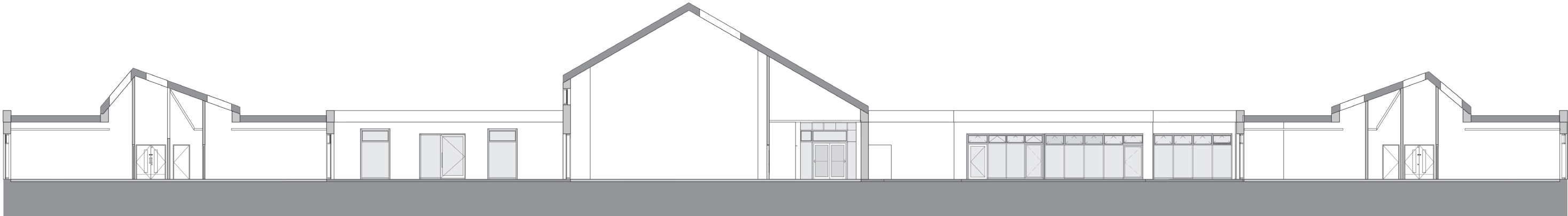
Workshop 4 // The Floor Plan

EDC ASN School



Workshop 4 // The Section

EDC ASN School



Workshop 4 // Internal View

EDC ASN School



Workshop 4 // Internal View

EDC ASN School



Workshop 4 // Internal View

EDC ASN School



Workshop 4 // Internal View

EDC ASN School



Workshop 4 // Internal View

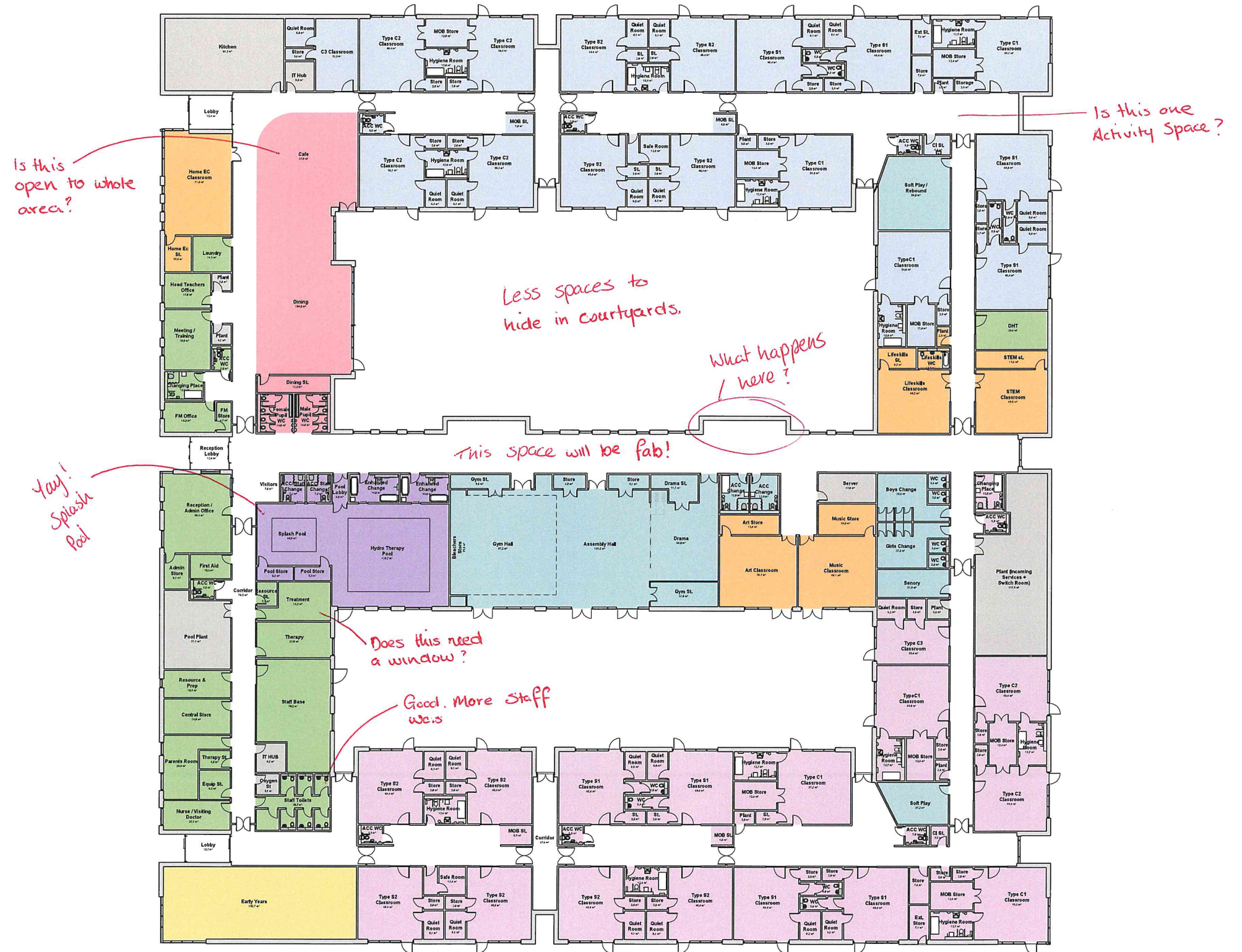
EDC ASN School



Workshop 4 // Interactive

'Red Pen Day'

- Architecture 'Red Pen Day' is a review of drawings to date and an opportunity to comment prior to a design freeze
- Using the red pens provided within the group review current layout and provide comments
- These comments can be good or bad but all thoughts are welcome to finalise aspirations
- Finish with a Q&A session.
A representative from each group presents comments for discussion with other groups and the design team



Workshop 3 // Future Workshops

Key Features

