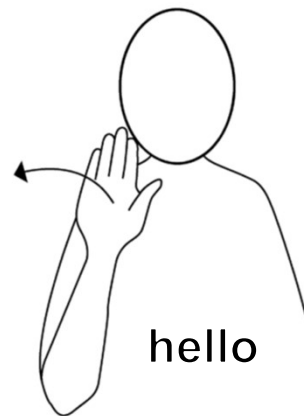


Welcome and Introductions

Gavin Haire – School Improvement and Planning Manager
Jan Pollok – Education Officer – Secondary and Provision

Janet Paterson – Acting Team Leader - Major Asset Projects
Caroline Bell and Paul Don - Major Asset Projects Officer

Architects appointed to the project - Norr



12th September 2019

Agenda

- **Introduction and welcome to the architects**
- **Headline information from Major Assets about the project and timeline**
- **Example images of new build schools**
- **Process for engagement with stakeholders in design development : Parents; Staff and other stakeholders e.g. NHS Practitioners**
- **Role of Interim Parent Council (Procedure Manual 3/45)**
- **Next Steps**

Introduction to Norr

12th September 2019



sustainable thriving achieving

East Dunbartonshire Council

www.eastdunbarton.gov.uk

The Architects



- 20 years of high quality school buildings
- 45 completed Scottish school projects; 1 more about to start on site
- £700m+ combined value
- 5 large campuses
- 20 secondary schools
- 12 ASN Facilities
- 20 years of doing, 20 years of learning, 20 years of listening....
- Open minded and collaborative....

Kevin Cooper
Project Director



Brian O'Donnell
Project Associate



Ross Park
Project Architect



Jennifer Freeman
Architectural Assistant



12th September 2019



sustainable thriving achieving

East Dunbartonshire Council

www.eastdunbarton.gov.uk

Indicative Timeline

PRE-CONSTRUCTION – Approx 12 months

Stage 0 - Procurement & Design Feasibility

- Brief forming (Outline design brief complete)
- Appointment of Delivery Partner and Contractor/ Design Team (Appointed)
- Survey Work

Stage 1

- Concept Design
- Outline cost plan and programme

Stage 2

- Developed and Technical design
- Planning application and Building warrant submissions
- Market testing and final price and programme

CONSTRUCTION – Approx 18 months to 2 years

Example school images

12th September 2019



sustainable thriving achieving

East Dunbartonshire Council

www.eastdunbarton.gov.uk

Craigmarloch School



12th September 2019



sustainable thriving achieving

East Dunbartonshire Council

www.eastdunbarton.gov.uk

Examples of space in ASN school

- The attached pictures are examples of the PE Hall, Auditorium, Music Room and a class space in Craigmarloch



Bertha Park High School, Perth



12th September 2019

ASN Experience - Continued Learning



PROJECT

- Ross High School ASN Unit - Extension to existing Secondary School covering a variety of ASN needs
- All Saints Primary School, Greenock - Primary Language Communication Support Centre forms integral part of building
- Carnegie Primary School, Dunfermline - ASN wing in pinwheel multi-wing plan; part of first BREEAM “Outstanding” rated primary school to be completed in the UK
- Clydeview Academy, Gourock - Hearing Impairment Unit
- Notre Dame High School, Greenock - Secondary Language Communication Support Centre forms integral part of building
- Clyde Valley Campus - Primary Language Communication Support Centre forms integral part of wider campus
- Perth Western Secondary School, Perth - Secondary Language Communication Support Centre forms integral part of building
- Cumbernauld High School and Theatre, Cumbernauld - Secondary Language Communication Support Centre forms integral part of wider campus which also includes a new theatre for the area

12th September 2019

Examples of social spaces

- Informal study
- Flexibility in spaces



Role of Stakeholders in the Design Development

- To help shape the project development and provide feedback during the design stages. This will be carried out via design workshops/ presentations with the design team and EDC.



Design Considerations.....

- **Site info and site analysis**
- **Statutory and Stakeholder consultation**
- **Brief**
- **Design review/development report**
- **Functionality and adjacencies**
- **Views and Natural Light**
- **Consider wide range of abilities**
- **Attention to detail/ergonomics**
- **The importance of storage**
- **Ensuring Dignity for all**
- **Vehicle access and safety**
- **Security versus access to external spaces**
- **Climate control/Comfort**

Design Considerations Cont...

- Outcome from the earlier engagement from the Interim Parent Council
- Outline Design Brief prepared in consultation with the Interim Parent Council

Role of Interim Parent Council

- Support school and the Council in development of the new school
- Represent views of parents from both schools
- Encourage involvement of all stakeholders
- Report back to parent forum and existing school parent councils
- Runs in parallel with existing parent councils
- Will continue for a period of 2- 3 years as school development progresses

Activities of Interim Parent Council cont....

- **Act as consultee for design development process**
- **Share information with parent body to canvas widest possible views**
- **Represent parents in the development of policies affecting the new school e.g travel planning**
- **Support recruitment of senior staff**
- **Lead consultation on the name, uniform and badge for new school uniform**

Nominations process

- As before, hand in nominations for this no later than 20th September.
- School will advise all parents who nominees are.
- Tear off slip – or other means school chooses – used for parents to vote for nominee by close of play on 26th September.
- Votes collated by the Education Service.
- Names of nominees announced to both school communities.

Questions Next Steps

12th September 2019



sustainable thriving achieving

East Dunbartonshire Council

www.eastdunbarton.gov.uk